



<http://www.ebiz-tcf.eu>

DRAFT

IMPLEMENTATION GUIDE

TRANSACTION "ACCESSORY DESPATCH ADVICE"

Version: draft

Date of release: 17/5/2019

Document code: G037

technical Documentation: <http://www.ebiz.enea.it>

XML Schemas repository: <http://www.ebiz.enea.it/moda-ml/repository/schema/draft/default.asp>

Guides repository: <http://www.ebiz.enea.it/moda-ml/repository/guide/draft/default.asp>

Guide filename: G037-eBIZ-AccessoryDespatchAdvice.pdf

0. PREMISE

This document contains a proposal for the updating and extension of eBIZ specifications starting from the eBIZ version released as CEN CWA 16667 in 2013. Under the name of 'Draft version' it is reported the result of an extensive work of analysis and consultation aimed at developing and maintaining eBIZ specifications.

In particular, the content of this proposal is the result of various activities, mainly those carried out within the framework of the **eBIZ 4.0 project** funded by the European Commission, call COS-DESIGN-2015-3-06, topic COS-2015-DESIGN-2.

The technical contents are backwards compatible with the latest official published version.

1. BUSINESS DESCRIPTION

1.1 Scope

The present guide has been issued to assist the companies of the Textile-Clothing sector in the implementation of the standard XML document type "GARMENT ACCESSORY DESPATCH ADVISE", providing all the instruction required for its use in any context of e-commerce between Apparel or Fabric Producers and Garment accessory Producers (Suppliers).

All the rules required for the construction and validation of the document are embedded into the specific XML-Schema, which is detailed in section "Implementation guide".

1.2 Generalities

The message is issued to anticipate the details the articles actually despatched. The same message can be used with the client for sale and with the subcontractor for working operation.

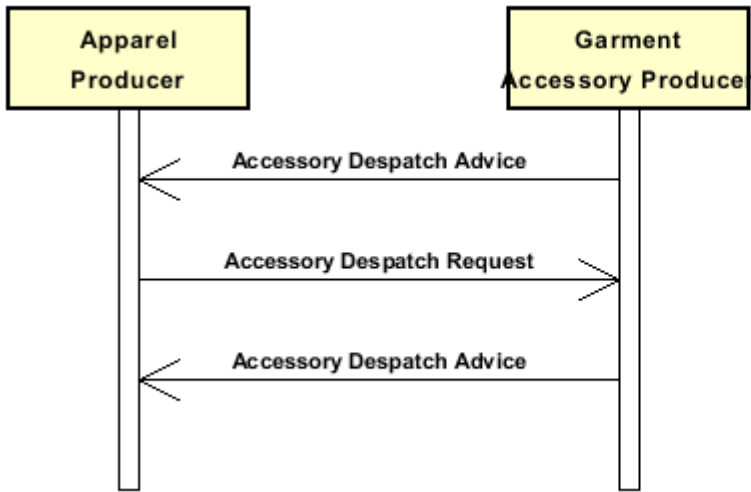
This document can be used:

- as a standard despatch advice
- as a pre-despatch notification of the goods that are to be despatched.

Each document item must correspond with a well defined fabric article (article + pattern + color); for each item is possible to reference the Order line that is delivered.

1.3. Possible scenario

Delivery of garment accessories



2. IMPLEMENTATION GUIDE

2.1 General structure of XML document

All the business data that can be exchanged through this class of documents are shown in the following "document structure", that provides a simplified vision of the Schema.

In particular:

- the two numbers following each element define its "cardinality" (minimum and maximum number of occurrences); the minimum equal zero indicates that the element is optional, the minimum greater than zero indicates that is mandatory;
- the bold character denotes the complex elements (aggregates of simple elements) that were built for the sake of functionality and re-usability of some complex informations sets. The child elements in each parent element are easily spotted as "indented";
- the symbol "@" denotes an attribute of the preceding element; here "the usage indicator (optional, required, ...)" is shown in square brackets.

Structure

ACSDesAdvise

```
@TAType [Optional] [Default= STD]
@msgfunction [Optional] [Default= OR]
@version [Optional] [Default= draft]
@useProfile [Optional]
| TAheader 1-1
| | msgN 1-1
| | - choose -
| | msgID 0-1
| | - or -
| | docID 0-1
| | @numberingOrg [Optional]
| | - end choose -
| | msgDate 1-1
| | @dateForm [Optional]
| | refDoc 0-9
| | @docType [Required]
| | | docID 1-2
| | | @numberingOrg [Optional]
| | | docDate 0-1
| | | @dateForm [Optional]
| | | season 0-1
| | | @numberingOrg [Optional]
| | | @codeList [Optional]
| | | @listName [Optional]
| | | @listVersion [Optional]
| | | itemID 0-1
| | | attachment 0-1
| | | @uid [Optional]
| | | | fileName 0-1
| | | | @numberingOrg [Optional]
| | | | binaryObject 0-1
| | | | @format [Optional]
| | | | @mime [Optional]
| | | | @encoding [Optional]
| | | | @characterSet [Optional]
| | | | externalReference 0-99
| | | | | uri 1-1
| | | | | @isURL [Optional] [Default= true]
| | | | | mimeTypeCode 0-1
| | | | | formatCode 0-1
```

			encodingCode 0-1
			characterSetCode 0-1
			buyer 1-1
			@logo [Optional]
			@sender [Optional]
			id 1-1
			@numberingOrg [Optional]
			additionalIdentifier 0-9
			@numberingOrg [Optional]
			@idQualifier [Optional]
			legalName 0-1
			dept 0-1
			subDept 0-1
			person 0-1
			@email [Optional]
			@phone [Optional]
			@fax [Optional]
			street 0-1
			city 0-1
			subCountry 0-1
			country 0-1
			postCode 0-1
			supplier 1-1
			@logo [Optional]
			@sender [Optional]
			id 1-1
			@numberingOrg [Optional]
			additionalIdentifier 0-9
			@numberingOrg [Optional]
			@idQualifier [Optional]
			legalName 0-1
			dept 0-1
			subDept 0-1
			person 0-1
			@email [Optional]
			@phone [Optional]
			@fax [Optional]
			street 0-1
			city 0-1
			subCountry 0-1
			country 0-1
			postCode 0-1
			thirdParty 0-5
			@VAT [Optional]
			@role [Required]
			@sender [Optional]
			id 1-1
			@numberingOrg [Optional]
			legalName 0-1
			dept 0-1
			subDept 0-1
			person 0-1
			@email [Optional]
			@phone [Optional]
			@fax [Optional]
			street 0-1
			city 0-1
			subCountry 0-1
			country 0-1
			postCode 0-1
			note 0-99

| | @numberingOrg [Optional]
| | @codeList [Optional]
| | @noteLabel [Optional]

| **trade 0-1**

| - choose -

| | incoTermText 1-1

| - or -

| | incoTerm 1-1

| - end choose -

| | location 0-1

| | @LRI [Optional]

| **shiplInfo 0-1**

| | **transInfo 0-9**

| | @transReason [Optional]

| | @progr [Optional]

| | | transMode 1-1

| | | carrier 0-1

| | | deliveryPlace 0-1

| | | grossWeight 0-1

| | | | @um [Required]

| | | netWeight 0-1

| | | | @um [Required]

| | | transMeans 0-1

| | | transCondition 0-3

| | | transConditionText 0-1

| | | despatchPlace 0-1

| | | despatchDate 0-1

| | | | @dateForm [Optional]

| | | delEffectiveDate 0-1

| | | | @dateForm [Optional]

| | delEffectiveDate 0-1

| | | @dateForm [Optional]

| | **packages 0-99**

| | @packageLevel [Optional]

| | - choose -

| | | packageText 1-1

| | - or -

| | | package 1-1

| | - end choose -

| | | packageModelCode 0-1

| | | | @numberingOrg [Optional]

| | | description 0-unbounded

| | | | @ln [Optional]

| | | **packageDim 0-1**

| | | | length 1-1

| | | | | @um [Required]

| | | | width 0-1

| | | | | @um [Required]

| | | | height 0-1

| | | | | @um [Required]

| | | **handlingChar 0-1**

| | | - choose -

| | | **yarnPack 0-1**

| | | | **yarnReel 1-1**

| | | | | @reelType [Required]

| | | | | @reelMat [Optional]

| | | | | yarnReelD 0-1

| | | | | | @um [Required]

| | | | | yarnReelH 0-1

```

| | | | | @um [Required]
| | | | | yarnConeAngle 0-1
| | | | | yarnReelQty 0-2
| | | | | @um [Required]
| | | | | label 0-1
| | | | | labelWrit 0-1
| | | | | yarnInWrap 0-1
| | | | | yarnReelWrap 1-1
| | | | | label 0-1
| | | | | labelWrit 0-1
| | | | | - choose -
| | | | | | yarnOutWrapText 0-1
| | | | | - or -
| | | | | | yarnOutWrap 0-1
| | | | | - end choose -
| | | | | - or -
| | | | | piecePack 0-1
| | | | | - choose -
| | | | | | piecePackText 1-1
| | | | | - or -
| | | | | | pieceInnWrap1 1-1
| | | | | | pieceInnWrap2 0-1
| | | | | | pieceOutWrap 0-1
| | | | | - end choose -
| | | | | - or -
| | | | | acsPack 0-1
| | | | | - choose -
| | | | | | acsPackCode 1-1
| | | | | - or -
| | | | | | acsPackText 1-1
| | | | | - end choose -
| | | | | - or -
| | | | | garPack 0-1
| | | | | - choose -
| | | | | | garPackCode 1-1
| | | | | - or -
| | | | | | garPackText 1-1
| | | | | - end choose -
| | | | | - end choose -
| | | | | sortableIndicator 0-1
| | | | | stackabilityLevel 0-1
| | | | | handlingType 0-1
| | | | | @In [Optional]
| | | | | volume 0-1
| | | | | @um [Required]
| | | | | netWeight 0-1
| | | | | @um [Required]
| | | | | grossWeight 0-1
| | | | | @um [Required]
| | | | | note 0-99
| | | | | @numberingOrg [Optional]
| | | | | @codeList [Optional]
| | | | | @noteLabel [Optional]
| | | | | itemsPerPackage 0-1
| | | | | @um [Required]
| | | | | minItemsPerPackage 0-1
| | | | | @um [Required]
| | | | | fillingCriterion 0-9
| | | | | @progr [Optional]
| | | | | packageQty 0-1
| | | | | packageN 0-unbounded

```

```

| | | @numberingOrg [Optional]
| | | @packageContainerN [Optional]
| | | EPCList 0-1
| | | | EPC 1-unbounded
| | | | @numberingOrg [Optional]
| | | | @TID [Optional]
| | | actualPackageUnit 0-unbounded
| | | | @packageLevel [Optional]
| | | | | packageIdentification 1-1
| | | | | | packageN 1-1
| | | | | | @numberingOrg [Optional]
| | | | | | @packageContainerN [Optional]
| | | | | | serialN 0-9
| | | | | | @numberingOrg [Optional]
| | | | | | @idQualifier [Optional]
| | | - choose -
| | | | packageText 0-1
| | | - or -
| | | | package 0-1
| | | - end choose -
| | | | packageModelCode 0-1
| | | | | @numberingOrg [Optional]
| | | | | volume 0-1
| | | | | | @um [Required]
| | | | | netWeight 0-1
| | | | | | @um [Required]
| | | | | grossWeight 0-1
| | | | | | @um [Required]
| | | | | packageDim 0-1
| | | | | | length 1-1
| | | | | | | @um [Required]
| | | | | | width 0-1
| | | | | | | @um [Required]
| | | | | | height 0-1
| | | | | | | @um [Required]
| | | | | actualItemsPerPackage 0-1
| | | | | packagesList 0-1
| | | | | | packageIdentification 1-unbounded
| | | | | | | packageN 1-1
| | | | | | | | @numberingOrg [Optional]
| | | | | | | | @packageContainerN [Optional]
| | | | | | | serialN 0-9
| | | | | | | | @numberingOrg [Optional]
| | | | | | | | @idQualifier [Optional]
| | | | | | itemsList 0-1
| | | | | | | qualityLevel 0-1
| | | | | | | | @numberingOrg [Optional]
| | | | | | | | @codeList [Optional]
| | | | | | | | @listName [Optional]
| | | | | | | | @listVersion [Optional]
| | | | | | | itemIdentification 1-unbounded
| | | | | | | | serialN 1-9
| | | | | | | | | @numberingOrg [Optional]
| | | | | | | | | @idQualifier [Optional]
| | | | | note 0-99
| | | | | | @numberingOrg [Optional]
| | | | | | @codeList [Optional]
| | | | | | @noteLabel [Optional]

```

| **acsPack 0-1**

- choose -

| | acsPackCode 1-1
 - or -
 | | acsPackText 1-1
 - end choose -

| **AAbody 1-1**

| | **AAitem 1-unbounded**
 | | *@extinction [Optional]*
 | | lineN 1-1
 | | *@VAT [Optional]*
 | | lineID 0-1
 | | **refDoc 0-9**
 | | *@docType [Required]*
 | | docID 1-2
 | | *@numberingOrg [Optional]*
 | | docDate 0-1
 | | *@dateForm [Optional]*
 | | season 0-1
 | | *@numberingOrg [Optional]*
 | | *@codeList [Optional]*
 | | *@listName [Optional]*
 | | *@listVersion [Optional]*
 | | itemID 0-1
 | | **attachment 0-1**
 | | *@uid [Optional]*
 | | fileName 0-1
 | | *@numberingOrg [Optional]*
 | | binaryObject 0-1
 | | *@format [Optional]*
 | | *@mime [Optional]*
 | | *@encoding [Optional]*
 | | *@characterSet [Optional]*
 | | **externalReference 0-99**
 | | uri 1-1
 | | *@isURL [Optional] [Default= true]*
 | | mimeTypeCode 0-1
 | | formatCode 0-1
 | | encodingCode 0-1
 | | characterSetCode 0-1
 | | **acsCode 1-2**
 | | *@numberingOrg [Optional]*
 | | art 1-1
 | | *@numberingOrg [Optional]*
 | | *@codeList [Optional]*
 | | *@listName [Optional]*
 | | *@listVersion [Optional]*
 | | pattern 0-1
 | | *@numberingOrg [Optional]*
 | | *@codeList [Optional]*
 | | *@listName [Optional]*
 | | *@listVersion [Optional]*
 | | color 0-1
 | | *@numberingOrg [Optional]*
 | | *@codeList [Optional]*
 | | *@listName [Optional]*
 | | *@listVersion [Optional]*
 | | added 0-9
 | | *@numberingOrg [Optional]*
 | | *@addType [Optional]*
 | | description 0-unbounded
 | | *@ln [Optional]*

acsName 0-1
 qty 1-2
 @um [Required]
csRange 0-99
 @numberingOrg [Optional]
 @sizeSystemNat [Optional]
 @sizeSystemSeg [Optional]
 @sizeSystemBase [Optional]
 @sizeSystemID [Optional]
 | color 0-1
 | @numberingOrg [Optional]
 | @codeList [Optional]
 | @listName [Optional]
 | @listVersion [Optional]
garmentVariant 0-9
 | variantType 1-1
 | @numberingOrg [Optional]
 | @codeList [Optional]
 | @listName [Optional]
 | @listVersion [Optional]
 | variantCode 1-1
 | @numberingOrg [Optional]
 | @codeList [Optional]
 | @listName [Optional]
 | @listVersion [Optional]
 drop 0-1
 @codeList [Optional]
sizeMatrix 1-1
 | **sizeRow 1-99**
 | | additionalComponentCode 0-9
 | | @numberingOrg [Optional]
 | | @codeList [Optional]
 | | @listName [Optional]
 | | @listVersion [Optional]
 | | drop 0-1
 | | @codeList [Optional]
 | | size 1-1
 | | @codeList [Optional]
 | | qty 0-1
 | | @um [Required]
 | | **itemsList 0-1**
 | | | qualityLevel 0-1
 | | | @numberingOrg [Optional]
 | | | @codeList [Optional]
 | | | @listName [Optional]
 | | | @listVersion [Optional]
 | | | **itemIdentification 1-unbounded**
 | | | | serialN 1-9
 | | | | @numberingOrg [Optional]
 | | | | @idQualifier [Optional]
 lotN 0-2
 @numberingOrg [Optional]
thirdParty 0-1
 @VAT [Optional]
 @role [Required]
 @sender [Optional]
 | id 1-1
 | @numberingOrg [Optional]
 legalName 0-1
 dept 0-1
 subDept 0-1

```

| | | | person 0-1
| | | |   @email [Optional]
| | | |   @phone [Optional]
| | | |   @fax [Optional]
| | | | street 0-1
| | | | city 0-1
| | | | subCountry 0-1
| | | | country 0-1
| | | | postCode 0-1
| | | | shipInfo 0-1
| | | |   transInfo 0-9
| | | |     @transReason [Optional]
| | | |     @progr [Optional]
| | | |       transMode 1-1
| | | |       carrier 0-1
| | | |       deliveryPlace 0-1
| | | |       grossWeight 0-1
| | | |       @um [Required]
| | | |       netWeight 0-1
| | | |       @um [Required]
| | | |       transMeans 0-1
| | | |       transCondition 0-3
| | | |       transConditionText 0-1
| | | |       despatchPlace 0-1
| | | |       despatchDate 0-1
| | | |       @dateForm [Optional]
| | | |       delEffectiveDate 0-1
| | | |       @dateForm [Optional]
| | | | delEffectiveDate 0-1
| | | |   @dateForm [Optional]
| | | |   packages 0-99
| | | |   @packageLevel [Optional]
| | | | - choose -
| | | |   | packageText 1-1
| | | | - or -
| | | |   | package 1-1
| | | | - end choose -
| | | |   | packageModelCode 0-1
| | | |   | @numberingOrg [Optional]
| | | |   | description 0-unbounded
| | | |   | @ln [Optional]
| | | |   | packageDim 0-1
| | | |     | length 1-1
| | | |     | @um [Required]
| | | |     | width 0-1
| | | |     | @um [Required]
| | | |     | height 0-1
| | | |     | @um [Required]
| | | |   | handlingChar 0-1
| | | |   - choose -
| | | |   | yarnPack 0-1
| | | |     | yarnReel 1-1
| | | |       | @reelType [Required]
| | | |       | @reelMat [Optional]
| | | |       | yarnReelD 0-1
| | | |       | @um [Required]
| | | |       | yarnReelH 0-1
| | | |       | @um [Required]
| | | |       | yarnConeAngle 0-1
| | | |       | yarnReelQty 0-2
| | | |       | @um [Required]

```

```

| | | | | | | | label 0-1
| | | | | | | | labelWrit 0-1
| | | | | | | | yarnInWrap 0-1
| | | | | | | | yarnReelWrap 1-1
| | | | | | | | label 0-1
| | | | | | | | labelWrit 0-1
| | | | | | | | - choose -
| | | | | | | | yarnOutWrapText 0-1
| | | | | | | | - or -
| | | | | | | | yarnOutWrap 0-1
| | | | | | | | - end choose -
| | | | | | | | - or -
| | | | | | | | piecePack 0-1
| | | | | | | | - choose -
| | | | | | | | piecePackText 1-1
| | | | | | | | - or -
| | | | | | | | pieceInnWrap1 1-1
| | | | | | | | pieceInnWrap2 0-1
| | | | | | | | pieceOutWrap 0-1
| | | | | | | | - end choose -
| | | | | | | | - or -
| | | | | | | | acsPack 0-1
| | | | | | | | - choose -
| | | | | | | | acsPackCode 1-1
| | | | | | | | - or -
| | | | | | | | acsPackText 1-1
| | | | | | | | - end choose -
| | | | | | | | - or -
| | | | | | | | garPack 0-1
| | | | | | | | - choose -
| | | | | | | | garPackCode 1-1
| | | | | | | | - or -
| | | | | | | | garPackText 1-1
| | | | | | | | - end choose -
| | | | | | | | - end choose -
| | | | | | | | sortableIndicator 0-1
| | | | | | | | stackabilityLevel 0-1
| | | | | | | | handlingType 0-1
| | | | | | | | @In [Optional]
| | | | | | | | volume 0-1
| | | | | | | | @um [Required]
| | | | | | | | netWeight 0-1
| | | | | | | | @um [Required]
| | | | | | | | grossWeight 0-1
| | | | | | | | @um [Required]
| | | | | | | | note 0-99
| | | | | | | | @numberingOrg [Optional]
| | | | | | | | @codeList [Optional]
| | | | | | | | @noteLabel [Optional]
| | | | | | | | itemsPerPackage 0-1
| | | | | | | | @um [Required]
| | | | | | | | minItemsPerPackage 0-1
| | | | | | | | @um [Required]
| | | | | | | | fillingCriterion 0-9
| | | | | | | | @progr [Optional]
| | | | | | | | packageQty 0-1
| | | | | | | | packageN 0-unbounded
| | | | | | | | @numberingOrg [Optional]
| | | | | | | | @packageContainerN [Optional]
| | | | | | | | EPCList 0-1
| | | | | | | | EPC 1-unbounded

```

```

| | | | | @numberingOrg [Optional]
| | | | | @TID [Optional]
| | | | | actualPackageUnit 0-unbounded
| | | | | @packageLevel [Optional]
| | | | | | packageIdentification 1-1
| | | | | | | packageN 1-1
| | | | | | | @numberingOrg [Optional]
| | | | | | | @packageContainerN [Optional]
| | | | | | | serialN 0-9
| | | | | | | @numberingOrg [Optional]
| | | | | | | @idQualifier [Optional]
| | | | | - choose -
| | | | | | packageText 0-1
| | | | | - or -
| | | | | | package 0-1
| | | | | - end choose -
| | | | | | packageModelCode 0-1
| | | | | | | @numberingOrg [Optional]
| | | | | | | volume 0-1
| | | | | | | @um [Required]
| | | | | | | netWeight 0-1
| | | | | | | @um [Required]
| | | | | | | grossWeight 0-1
| | | | | | | @um [Required]
| | | | | | | packageDim 0-1
| | | | | | | | length 1-1
| | | | | | | | @um [Required]
| | | | | | | | width 0-1
| | | | | | | | @um [Required]
| | | | | | | | height 0-1
| | | | | | | | @um [Required]
| | | | | | | actualItemsPerPackage 0-1
| | | | | | | packagesList 0-1
| | | | | | | | packageIdentification 1-unbounded
| | | | | | | | | packageN 1-1
| | | | | | | | | @numberingOrg [Optional]
| | | | | | | | | @packageContainerN [Optional]
| | | | | | | | | serialN 0-9
| | | | | | | | | @numberingOrg [Optional]
| | | | | | | | | @idQualifier [Optional]
| | | | | | | | itemsList 0-1
| | | | | | | | | qualityLevel 0-1
| | | | | | | | | @numberingOrg [Optional]
| | | | | | | | | @codeList [Optional]
| | | | | | | | | @listName [Optional]
| | | | | | | | | @listVersion [Optional]
| | | | | | | | | itemIdentification 1-unbounded
| | | | | | | | | | serialN 1-9
| | | | | | | | | | @numberingOrg [Optional]
| | | | | | | | | | @idQualifier [Optional]
| | | | | | | | | note 0-99
| | | | | | | | | @numberingOrg [Optional]
| | | | | | | | | @codeList [Optional]
| | | | | | | | | @noteLabel [Optional]
| | | | | | | acsPack 0-1
| | | | | | | - choose -
| | | | | | | | acsPackCode 1-1
| | | | | | | - or -
| | | | | | | | acsPackText 1-1
| | | | | | | - end choose -
| | | | | | | EPC 0-unbounded

```

```

| | | @numberingOrg [Optional]
| | | @TID [Optional]
| | | itemsList 0-1
| | | | qualityLevel 0-1
| | | | | @numberingOrg [Optional]
| | | | | @codeList [Optional]
| | | | | @listName [Optional]
| | | | | @listVersion [Optional]
| | | | | itemIdentification 1-unbounded
| | | | | | serialN 1-9
| | | | | | | @numberingOrg [Optional]
| | | | | | | @idQualifier [Optional]
| | | packageN 0-unbounded
| | | | @numberingOrg [Optional]
| | | | @packageContainerN [Optional]
| | | note 0-99
| | | | @numberingOrg [Optional]
| | | | @codeList [Optional]
| | | | @noteLabel [Optional]

```

2.2 Detailed description of document elements

Following tables show all elements (complex and simple) used in this document. Description includes: 1) element's information: xml tag, name, brief description, data type and syntax constraints; 2) information about use of the element in a particular position in the document: xpath and possible associated notes.

2.2.1 Complex elements (Aggregate Business Information Entities)

Complex elements are those elements whose content is composed of other elements (childs).Complex elements are alphabetically ordered.

AAbody	body of the document ACCESSORY DESPATCH ADVISE (XPath ACSDesAdvise/AAbody) 1-1
AAitem	line item of the document ACCESSORY DESPATCH ADVISE (XPath ACSDesAdvise/AAbody/AAitem) 1-unbounded
acsCode	full codification identifying an accessory product usually coupled with garment or other fashion product (XPath ACSDesAdvise/AAbody/AAitem/acsCode) 1-2
acsPack	type of wrapping or packing of the accessory (XPath ACSDesAdvise/AAbody/AAitem/acsPack) 0-1 (XPath ACSDesAdvise/shipInfo/packages/handlingChar/acsPack) 0-1 (XPath ACSDesAdvise/acsPack) 0-1 (XPath ACSDesAdvise/AAbody/AAitem/shipInfo/packages/handlingChar/acsPack) 0-1
actualPackageUnit	description and identification of a single transport package (XPath ACSDesAdvise/AAbody/AAitem/shipInfo/actualPackageUnit) 0-unbounded - note: <i>this element might be repeated for listing each single package of the shipment</i> (XPath ACSDesAdvise/shipInfo/actualPackageUnit) 0-unbounded - note: <i>this element might be repeated for listing each single package of the shipment</i>
attachment	an attached document. An attachment can refer to an external document or be included with the document being exchanged (XPath ACSDesAdvise/AAbody/AAitem/refDoc/attachment) 0-1 (XPath ACSDesAdvise/TAheader/refDoc/attachment) 0-1
buyer	details of the Buyer (party that buys the good or service that is object of the current collaborative process) - base type: Nad, (XPath ACSDesAdvise/TAheader/buyer) 1-1
csRange	range of color-size for a fashion article (XPath ACSDesAdvise/AAbody/AAitem/csRange) 0-99
EPCList	list of identifiers used for tracing a physical item with RFID technology (XPath ACSDesAdvise/AAbody/AAitem/shipInfo/packages/EPCList) 0-1 - note: <i>this element is DEPRECATED, please use the specific elements</i> (XPath ACSDesAdvise/shipInfo/packages/EPCList) 0-1 - note: <i>this element is DEPRECATED, please use the specific elements</i>
externalReference	details about an external object, such as a document stored at a remote location (XPath ACSDesAdvise/AAbody/AAitem/refDoc/attachment/externalReference) 0-99 (XPath ACSDesAdvise/TAheader/refDoc/attachment/externalReference) 0-99
garmentVariant	garment product variant (XPath ACSDesAdvise/AAbody/AAitem/csRange/garmentVariant) 0-9 - note: <i>used only if not already specified in the article code</i>

garPack	<p>the packaging mode of the item or a part of it. (XPath ACSDesAdvise/AAbody/AAitem/shipInfo/packages/handlingChar/garPack) 0-1 (XPath ACSDesAdvise/shipInfo/packages/handlingChar/garPack) 0-1</p>
handlingChar	<p>features of an item (item or package) useful for its transport and warehouse management. (XPath ACSDesAdvise/AAbody/AAitem/shipInfo/packages/handlingChar) 0-1 - note: <i>in this case the characteristics are related to the package.</i> (XPath ACSDesAdvise/shipInfo/packages/handlingChar) 0-1 - note: <i>in this case the characteristics are related to the package.</i></p>
itemIdentification	<p>serial identification of a product unit (XPath ACSDesAdvise/AAbody/AAitem/itemsList/itemIdentification) 1-unbounded - note: <i>identification of the single product unit contained in the list</i> (XPath ACSDesAdvise/AAbody/AAitem/csRange/sizeMatrix/sizeRow/itemsList/itemIdentification) 1-unbounded - note: <i>identification of the single product unit contained in the list</i> (XPath ACSDesAdvise/AAbody/AAitem/shipInfo/actualPackageUnit/itemsList/itemIdentification) 1-unbounded - note: <i>identification of the single product unit contained in the list</i> (XPath ACSDesAdvise/shipInfo/actualPackageUnit/itemsList/itemIdentification) 1-unbounded - note: <i>identification of the single product unit contained in the list</i></p>
itemsList	<p>list of the single product units (XPath ACSDesAdvise/AAbody/AAitem/csRange/sizeMatrix/sizeRow/itemsList) 0-1 - note: <i>the usage in this position is alternative to its usage within the document line element</i> (XPath ACSDesAdvise/AAbody/AAitem/itemsList) 0-1 - note: <i>the usage in this position is alternative to its usage within sizeRow</i> (XPath ACSDesAdvise/shipInfo/actualPackageUnit/itemsList) 0-1 (XPath ACSDesAdvise/AAbody/AAitem/shipInfo/actualPackageUnit/itemsList) 0-1</p>
packageDim	<p>dimensions of a transport package (XPath ACSDesAdvise/AAbody/AAitem/shipInfo/packages/packageDim) 0-1 (XPath ACSDesAdvise/shipInfo/packages/packageDim) 0-1 (XPath ACSDesAdvise/AAbody/AAitem/shipInfo/actualPackageUnit/packageDim) 0-1 (XPath ACSDesAdvise/shipInfo/actualPackageUnit/packageDim) 0-1</p>
packageIdentification	<p>serial identification of a package (XPath ACSDesAdvise/AAbody/AAitem/shipInfo/actualPackageUnit/packageIdentification) 1-1 (XPath ACSDesAdvise/shipInfo/actualPackageUnit/packageIdentification) 1-1 (XPath ACSDesAdvise/AAbody/AAitem/shipInfo/actualPackageUnit/packagesList/packageIdentification) 1-unbounded - note: <i>identification of the single package contained in the list</i> (XPath ACSDesAdvise/shipInfo/actualPackageUnit/packagesList/packageIdentification) 1-unbounded - note: <i>identification of the single package contained in the list</i></p>
packages	<p>describes the composition of the transport packaging. Each element corresponds to a type of package: type, quantity, hierarchic level, list of identifiers of the single packages (XPath ACSDesAdvise/shipInfo/packages) 0-99 - note: <i>this element must be iterated for each type of package</i> (XPath ACSDesAdvise/AAbody/AAitem/shipInfo/packages) 0-99 - note: <i>this element must be iterated for each type of package</i></p>
packagesList	<p>list of single packages</p>

	<p>(XPath ACSDesAdvise/shipInfo/actualPackageUnit/packagesList) 0-1 - note: <i>list of packages contained within the actual package (thus with lower level). All the packages in the list should preferably have the same level.</i> (XPath ACSDesAdvise/AAbody/AAitem/shipInfo/actualPackageUnit/packagesList) 0-1 - note: <i>list of packages contained within the actual package (thus with lower level). All the packages in the list should preferably have the same level.</i></p>
piecePack	<p>type of wrapping or packing of the fabric pieces (XPath ACSDesAdvise/AAbody/AAitem/shipInfo/packages/handlingChar/piecePack) 0-1 (XPath ACSDesAdvise/shipInfo/packages/handlingChar/piecePack) 0-1</p>
refDoc	<p>identification of a document and of an item thereof, to which the message makes reference (XPath ACSDesAdvise/AAbody/AAitem/refDoc) 0-9 (XPath ACSDesAdvise/TAheader/refDoc) 0-9</p>
shipInfo	<p>miscellaneous information on transport and transport packages, referred either to the whole document or to the single item (XPath ACSDesAdvise/AAbody/AAitem/shipInfo) 0-1 (XPath ACSDesAdvise/shipInfo) 0-1</p>
sizeMatrix	<p>size matrix of an apparel product (XPath ACSDesAdvise/AAbody/AAitem/csRange/sizeMatrix) 1-1</p>
sizeRow	<p>size matrix row of an apparel product (XPath ACSDesAdvise/AAbody/AAitem/csRange/sizeMatrix/sizeRow) 1-99</p>
supplier	<p>details of the Supplier (party that supplies the good or service that is object of the current collaborative process) - base type: Nad, (XPath ACSDesAdvise/TAheader/supplier) 1-1</p>
TAheader	<p>header of the TEXTILES (YARN) DESPATCH ADVISE (XPath ACSDesAdvise/TAheader) 1-1</p>
thirdParty	<p>details of the Third Party, different from Buyer or Supplier - base type: Nad, (XPath ACSDesAdvise/TAheader/thirdParty) 0-5 - note: <i>here the Consignee when different from the Client must be specified</i> (XPath ACSDesAdvise/AAbody/AAitem/thirdParty) 0-1</p>
trade	<p>general terms of trade for the specified supply (XPath ACSDesAdvise/trade) 0-1</p>
transInfo	<p>details of transport: mode, carrier and delivery place (XPath ACSDesAdvise/AAbody/AAitem/shipInfo/transInfo) 0-9 - note: <i>this data group can be iterated for each transport leg. They have to be in ordered sequence from initial place up to the final delivery place.</i> (XPath ACSDesAdvise/shipInfo/transInfo) 0-9 - note: <i>this data group can be iterated for each transport leg. They have to be in ordered sequence from initial place up to the final delivery place.</i></p>
yarnInWrap	<p>details specifying the inner wrapping of a yarn product (XPath ACSDesAdvise/shipInfo/packages/handlingChar/yarnPack/yarnInWrap) 0-1 (XPath ACSDesAdvise/AAbody/AAitem/shipInfo/packages/handlingChar/yarnPack/yarnInWrap) 0-1</p>
yarnPack	<p>details of type of presentation used for the yarn (XPath ACSDesAdvise/shipInfo/packages/handlingChar/yarnPack) 0-1 (XPath ACSDesAdvise/AAbody/AAitem/shipInfo/packages/handlingChar/yarnPack) 0-1</p>
yarnReel	<p>details of the packaging of a yarn product (bobbin and reel,..)</p>

	(XPath ACSDesAdvise/AAbody/AAitem/shipInfo/packages/handlingChar/yarnPack/yarnReel) 1-1 (XPath ACSDesAdvise/shipInfo/packages/handlingChar/yarnPack/yarnReel) 1-1
--	--

2.2.2 Simple elements (Basic Business Information Entities)

Simple elements are those elements whose content is characterized by a data type plus a domain of possible values. Simple elements are alphabetically ordered.

acsName	denomination of an accessory product usually coupled with garment - base type: string, max length: 100, (XPath ACSDesAdvise/AAbody/AAitem/acsName) 0-1
acsPackCode	code specifying the type of wrapping or packing used for the accessory - base type: string, (XPath ACSDesAdvise/shipInfo/packages/handlingChar/acsPack/acsPackCode) 1-1 (XPath ACSDesAdvise/AAbody/AAitem/acsPack/acsPackCode) 1-1 (XPath ACSDesAdvise/AAbody/AAitem/shipInfo/packages/handlingChar/acsPack/acsPackCode) 1-1 (XPath ACSDesAdvise/acsPack/acsPackCode) 1-1
acsPackText	free text specifying the type of wrapping or packing used for the accessory - base type: string, max length: 250, (XPath ACSDesAdvise/AAbody/AAitem/shipInfo/packages/handlingChar/acsPack/acsPackText) 1-1 (XPath ACSDesAdvise/AAbody/AAitem/acsPack/acsPackText) 1-1 (XPath ACSDesAdvise/acsPack/acsPackText) 1-1 (XPath ACSDesAdvise/shipInfo/packages/handlingChar/acsPack/acsPackText) 1-1
actualItemsPerPackage	the quantity of items actually contained in the package - base type: decimal, (XPath ACSDesAdvise/AAbody/AAitem/shipInfo/actualPackageUnit/actualItemsPerPackage) 0-1 (XPath ACSDesAdvise/shipInfo/actualPackageUnit/actualItemsPerPackage) 0-1
added	additional code of the product (complementing the formers) - base type: string, max length: 80, (XPath ACSDesAdvise/AAbody/AAitem/acsCode/added) 0-9 - note: <i>here an additional codification (see table T44) can be specified</i>
additionalComponentCode	an additional code to identify a fashion product or a part of it (it is a way to codify the item, but it is not one of the codes to identify it). It is not a serial identifier. - base type: string, (XPath ACSDesAdvise/AAbody/AAitem/csRange/sizeMatrix/sizeRow/additionalComponentCode) 0-9
additionalIdentifier	additional identification code of a Party, for example customs registries or others - base type: string, max length: 15, (XPath ACSDesAdvise/THeader/supplier/additionalIdentifier) 0-9 - note: <i>identifiers for example for exports, such as MID (Manufacturer Identification Code), EORI (E.O.R.I. - Economic Operator Registration and Identification)</i> (XPath ACSDesAdvise/THeader/buyer/additionalIdentifier) 0-9 - note: <i>identifiers for example for exports, such as MID (Manufacturer Identification Code), EORI (E.O.R.I. - Economic Operator Registration and Identification)</i>

@addType	<p>qualifier of the additional coding of a product</p> <ul style="list-style-type: none"> - base type: string, cod. table: T44 http://www.ebiz.enea.it/moda-ml/repository/codelist/draft/gc_T44.xml (XPath ACSDesAdvise/AAbody/AAitem/acsCode/added/@addType) [Optional] <p>- nota: <i>addType</i> allows the clarification of the meaning of the added element content; it is strongly suggested to use it always.</p>
art	<p>article number of the product</p> <ul style="list-style-type: none"> - base type: string, max length: 80, (XPath ACSDesAdvise/AAbody/AAitem/acsCode/art) 1-1
binaryObject	<p>a binary large object containing an attached document</p> <ul style="list-style-type: none"> - base type: base64Binary, (XPath ACSDesAdvise/THeader/refDoc/attachment/binaryObject) 0-1 (XPath ACSDesAdvise/AAbody/AAitem/refDoc/attachment/binaryObject) 0-1
carrier	<p>identification of the transport carrier</p> <ul style="list-style-type: none"> - base type: string, max length: 40, (XPath ACSDesAdvise/AAbody/AAitem/shipInfo/transInfo/carrier) 0-1 (XPath ACSDesAdvise/shipInfo/transInfo/carrier) 0-1
@characterSet	<p>the character set of the binary object if the mime type is text</p> <ul style="list-style-type: none"> - base type: normalizedString, (XPath ACSDesAdvise/AAbody/AAitem/refDoc/attachment/binaryObject/@characterSet) [Optional] (XPath ACSDesAdvise/THeader/refDoc/attachment/binaryObject/@characterSet) [Optional]
characterSetCode	<p>the character set of an external document</p> <ul style="list-style-type: none"> - base type: normalizedString, (XPath ACSDesAdvise/AAbody/AAitem/refDoc/attachment/externalReference/characterSetCode) 0-1 (XPath ACSDesAdvise/THeader/refDoc/attachment/externalReference/characterSetCode) 0-1
city	<p>name of the city (town, village)</p> <ul style="list-style-type: none"> - base type: string, max length: 40, (XPath ACSDesAdvise/THeader/buyer/city) 0-1 (XPath ACSDesAdvise/AAbody/AAitem/thirdParty/city) 0-1 (XPath ACSDesAdvise/THeader/thirdParty/city) 0-1 (XPath ACSDesAdvise/THeader/supplier/city) 0-1
@codeList	<p>it specifies the URL where the list of codes used to make an instance of the element can be found</p> <ul style="list-style-type: none"> - base type: string, max length: 255, (XPath ACSDesAdvise/shipInfo/actualPackageUnit/note/@codeList) [Optional] - nota: <i>must be used to provide (URL) the list of codes used in "noteLabel"</i> (XPath ACSDesAdvise/AAbody/AAitem/csRange/color/@codeList) [Optional] - nota: <i>this attribute could be used as alternative to the others</i> (XPath ACSDesAdvise/shipInfo/packages/handlingChar/note/@codeList) [Optional] - nota: <i>must be used to provide (URL) the list of codes used in "noteLabel"</i> (XPath ACSDesAdvise/shipInfo/actualPackageUnit/itemsList/qualityLevel/@codeList) [Optional] (XPath ACSDesAdvise/AAbody/AAitem/refDoc/season/@codeList) [Optional] (XPath ACSDesAdvise/AAbody/AAitem/acsCode/art/@codeList) [Optional] - nota: <i>this attribute should be ALTERNATIVE to the others</i> (XPath ACSDesAdvise/AAbody/AAitem/acsCode/color/@codeList) [Optional] - nota: <i>this attribute could be used as alternative to the others</i> (XPath ACSDesAdvise/AAbody/AAitem/acsCode/pattern/@codeList) [Optional] - nota: <i>this attribute should be ALTERNATIVE to the others</i> (XPath ACSDesAdvise/AAbody/AAitem/csRange/garmentVariant/variantType/@codeList) [Optional] - nota: <i>this attribute should be ALTERNATIVE to the others</i> (XPath ACSDesAdvise/THeader/refDoc/season/@codeList) [Optional] (XPath ACSDesAdvise/AAbody/AAitem/csRange/sizeMatrix/sizeRow/drop/@codeList) [Optional]

	<p>(XPath ACSDesAdvise/AAbody/AAitem/csRange/sizeMatrix/sizeRow/additionalComponentCode/@codeList) [Optional]</p> <p>(XPath ACSDesAdvise/AAbody/AAitem/shipInfo/actualPackageUnit/itemsList/qualityLevel/@codeList) [Optional]</p> <p>(XPath ACSDesAdvise/AAbody/AAitem/shipInfo/packages/handlingChar/note/@codeList) [Optional]</p> <p>- nota: <i>must be used to provide (URL) the list of codes used in "noteLabel"</i></p> <p>(XPath ACSDesAdvise/AAbody/AAitem/note/@codeList) [Optional]</p> <p>- nota: <i>must be used to provide (URL) the list of codes used in "noteLabel"</i></p> <p>(XPath ACSDesAdvise/AAbody/AAitem/csRange/sizeMatrix/sizeRow/size/@codeList) [Optional]</p> <p>(XPath ACSDesAdvise/AAbody/AAitem/csRange/sizeMatrix/sizeRow/itemsList/qualityLevel/@codeList) [Optional]</p> <p>(XPath ACSDesAdvise/AAbody/AAitem/itemsList/qualityLevel/@codeList) [Optional]</p> <p>(XPath ACSDesAdvise/AAbody/AAitem/csRange/drop/@codeList) [Optional]</p> <p>(XPath ACSDesAdvise/AAbody/AAitem/csRange/garmentVariant/variantCode/@codeList) [Optional]</p> <p>- nota: <i>this attribute should be ALTERNATIVE to the others</i></p> <p>(XPath ACSDesAdvise/TAheader/note/@codeList) [Optional]</p> <p>- nota: <i>must be used to provide (URL) the list of codes used in "noteLabel"</i></p> <p>(XPath ACSDesAdvise/AAbody/AAitem/shipInfo/actualPackageUnit/note/@codeList) [Optional]</p> <p>- nota: <i>must be used to provide (URL) the list of codes used in "noteLabel"</i></p>
color	<p>colour number of the product, when not included in the model or fabric code</p> <p>- base type: string, max length: 15,</p> <p>(XPath ACSDesAdvise/AAbody/AAitem/csRange/color) 0-1</p> <p>- note: <i>used only if not already specified in the article code</i></p> <p>(XPath ACSDesAdvise/AAbody/AAitem/acsCode/color) 0-1</p>
country	<p>code of the nation</p> <p>- base type: string, cod. table: T10</p> <p>http://www.ebiz.enea.it/moda-ml/repository/codelist/draft/gc_T10.xml</p> <p>(XPath ACSDesAdvise/TAheader/supplier/country) 0-1</p> <p>(XPath ACSDesAdvise/TAheader/buyer/country) 0-1</p> <p>(XPath ACSDesAdvise/AAbody/AAitem/thirdParty/country) 0-1</p> <p>(XPath ACSDesAdvise/TAheader/thirdParty/country) 0-1</p>
@dateForm	<p>format used for the date</p> <p>- base type: string, cod. table: NT29</p> <p>http://www.ebiz.enea.it/moda-ml/repository/codelist/draft/gc_NT29.xml</p> <p>(XPath ACSDesAdvise/shipInfo/delEffectiveDate/@dateForm) [Optional]</p> <p>(XPath ACSDesAdvise/AAbody/AAitem/shipInfo/transInfo/delEffectiveDate/@dateForm) [Optional]</p> <p>(XPath ACSDesAdvise/AAbody/AAitem/refDoc/docDate/@dateForm) [Optional]</p> <p>(XPath ACSDesAdvise/AAbody/AAitem/shipInfo/transInfo/despatchDate/@dateForm) [Optional]</p> <p>(XPath ACSDesAdvise/shipInfo/transInfo/delEffectiveDate/@dateForm) [Optional]</p> <p>(XPath ACSDesAdvise/AAbody/AAitem/shipInfo/delEffectiveDate/@dateForm) [Optional]</p> <p>(XPath ACSDesAdvise/shipInfo/transInfo/despatchDate/@dateForm) [Optional]</p> <p>(XPath ACSDesAdvise/TAheader/refDoc/docDate/@dateForm) [Optional]</p> <p>(XPath ACSDesAdvise/TAheader/msgDate/@dateForm) [Optional]</p>
delEffectiveDate	<p>effective date of delivery of goods (declared in Despatch), according to one of the patterns YYYY-MM-DD, YYYY-MM-DD:HH-MM or YYYY-WW.</p> <p>- base type: string,</p> <p>(XPath ACSDesAdvise/AAbody/AAitem/shipInfo/transInfo/delEffectiveDate) 0-1</p> <p>(XPath ACSDesAdvise/shipInfo/transInfo/delEffectiveDate) 0-1</p> <p>(XPath ACSDesAdvise/shipInfo/delEffectiveDate) 0-1</p> <p>(XPath ACSDesAdvise/AAbody/AAitem/shipInfo/delEffectiveDate) 0-1</p>
deliveryPlace	<p>place of delivery of goods, ultimate or related to a given leg</p> <p>- base type: string, max length: 250,</p>

	(XPath ACSDesAdvise/AAbody/AAitem/shipInfo/transInfo/deliveryPlace) 0-1 (XPath ACSDesAdvise/shipInfo/transInfo/deliveryPlace) 0-1
dept	name or code of a contact department within a Party - base type: string, max length: 40, (XPath ACSDesAdvise/TAheader/buyer/dept) 0-1 (XPath ACSDesAdvise/TAheader/thirdParty/dept) 0-1 (XPath ACSDesAdvise/AAbody/AAitem/thirdParty/dept) 0-1 (XPath ACSDesAdvise/TAheader/supplier/dept) 0-1
description	free text description. The content of the element must be unique, it might be translated and repeated into more languages (thus no more than one instance for each language). - base type: string, max length: 250, (XPath ACSDesAdvise/AAbody/AAitem/shipInfo/packages/description) 0-unbounded (XPath ACSDesAdvise/AAbody/AAitem/acsCode/description) 0-unbounded - note: <i>Product description</i> (XPath ACSDesAdvise/shipInfo/packages/description) 0-unbounded
despatchDate	date of despatch of goods, requested or promised in the purchase process, according to one of the patterns YYYY-MM-DD, YYYY-MM-DD:HH-MM or YYYY-WW. - base type: string, (XPath ACSDesAdvise/AAbody/AAitem/shipInfo/transInfo/despatchDate) 0-1 (XPath ACSDesAdvise/shipInfo/transInfo/despatchDate) 0-1
despatchPlace	place of despatch of goods, origin or related to a given leg - base type: string, max length: 250, (XPath ACSDesAdvise/AAbody/AAitem/shipInfo/transInfo/despatchPlace) 0-1 (XPath ACSDesAdvise/shipInfo/transInfo/despatchPlace) 0-1
docDate	date of issue of the referenced document, according to one of the patterns YYYY-MM-DD, YYYY-MM-DD:HH-MM or YYYY-WW. - base type: string, (XPath ACSDesAdvise/AAbody/AAitem/refDoc/docDate) 0-1 (XPath ACSDesAdvise/TAheader/refDoc/docDate) 0-1
docID	identification number of the referenced document SINCE 2008-1 ITS USE IN THE HEADER IS DISCOURAGED (REPLACED BY msgID) - base type: string, max length: 80, (XPath ACSDesAdvise/AAbody/AAitem/refDoc/docID) 1-2 (XPath ACSDesAdvise/TAheader/docID) 0-1 (XPath ACSDesAdvise/TAheader/refDoc/docID) 1-2
@docType	type or class to which the referenced document belongs - base type: string, cod. table: T21 http://www.ebiz.enea.it/moda-ml/repository/codelist/draft/gc_T21.xml (XPath ACSDesAdvise/AAbody/AAitem/refDoc/@docType) [Required] (XPath ACSDesAdvise/TAheader/refDoc/@docType) [Required]
drop	drop number of the garment - base type: string, max length: 15, (XPath ACSDesAdvise/AAbody/AAitem/csRange/sizeMatrix/sizeRow/drop) 0-1 - note: <i>DEPRECATED, anyhow it is used only if not already specified in the article code or csRange</i> (XPath ACSDesAdvise/AAbody/AAitem/csRange/drop) 0-1 - note: <i>used only if not already specified in the article code</i>
@email	electronic mail address of the contact person within a Party - base type: string, max length: 250, (XPath ACSDesAdvise/AAbody/AAitem/thirdParty/person/@email) [Optional] (XPath ACSDesAdvise/TAheader/thirdParty/person/@email) [Optional] (XPath ACSDesAdvise/TAheader/buyer/person/@email) [Optional] (XPath ACSDesAdvise/TAheader/supplier/person/@email) [Optional]

@encoding	<p>specifies the decoding algorithm of the binary object</p> <ul style="list-style-type: none"> - base type: normalizedString, <p>(XPath ACSDesAdvise/AAbody/AAitem/refDoc/attachment/binaryObject/@encoding) [Optional] (XPath ACSDesAdvise/TAheader/refDoc/attachment/binaryObject/@encoding) [Optional]</p>
encodingCode	<p>the encoding/decoding algorithm used with the external object</p> <ul style="list-style-type: none"> - base type: normalizedString, <p>(XPath ACSDesAdvise/AAbody/AAitem/refDoc/attachment/externalReference/encodingCode) 0-1 (XPath ACSDesAdvise/TAheader/refDoc/attachment/externalReference/encodingCode) 0-1</p>
EPC	<p>serial identifier used for tracing a physical item with RFID technology</p> <ul style="list-style-type: none"> - base type: string, <p>(XPath ACSDesAdvise/shipInfo/packages/EPCList/EPC) 1-unbounded (XPath ACSDesAdvise/AAbody/AAitem/EPC) 0-unbounded</p> <p>- note: <i>this element is DEPRECATED, please use the specific elements (itemIdentification)</i></p> <p>(XPath ACSDesAdvise/AAbody/AAitem/shipInfo/packages/EPCList/EPC) 1-unbounded</p>
@extinction	<p>specified if the referred position (document/line) in refDoc is cleared (exhausted) by this line item. Value: True = exhausted, False = not exhausted</p> <ul style="list-style-type: none"> - base type: boolean, <p>(XPath ACSDesAdvise/AAbody/AAitem/@extinction) [Optional]</p>
@fax	<p>fax number of the contact person within a Party</p> <ul style="list-style-type: none"> - base type: string, max length: 35, <p>(XPath ACSDesAdvise/TAheader/supplier/person/@fax) [Optional] (XPath ACSDesAdvise/TAheader/buyer/person/@fax) [Optional] (XPath ACSDesAdvise/AAbody/AAitem/thirdParty/person/@fax) [Optional] (XPath ACSDesAdvise/TAheader/thirdParty/person/@fax) [Optional]</p>
fileName	<p>unique identifier (name) of the file</p> <ul style="list-style-type: none"> - base type: string, max length: 255, <p>(XPath ACSDesAdvise/AAbody/AAitem/refDoc/attachment/fileName) 0-1 (XPath ACSDesAdvise/TAheader/refDoc/attachment/fileName) 0-1</p>
fillingCriterion	<p>the assortment criterion to fill the specified kind of package: it states the homogeneity criterion (eg: "model", "color", "size").</p> <ul style="list-style-type: none"> - base type: string, cod. table: NT51 <p>http://www.ebiz.enea.it/moda-ml/repository/codelist/draft/gc_NT51.xml (XPath ACSDesAdvise/AAbody/AAitem/shipInfo/packages/fillingCriterion) 0-9 (XPath ACSDesAdvise/shipInfo/packages/fillingCriterion) 0-9</p>
@format	<p>the format of the binary content</p> <ul style="list-style-type: none"> - base type: string, <p>(XPath ACSDesAdvise/AAbody/AAitem/refDoc/attachment/binaryObject/@format) [Optional] (XPath ACSDesAdvise/TAheader/refDoc/attachment/binaryObject/@format) [Optional]</p>
formatCode	<p>the format of the external object</p> <ul style="list-style-type: none"> - base type: normalizedString, <p>(XPath ACSDesAdvise/TAheader/refDoc/attachment/externalReference/formatCode) 0-1 (XPath ACSDesAdvise/AAbody/AAitem/refDoc/attachment/externalReference/formatCode) 0-1</p>
garPackCode	<p>a code specifying the type of packaging used for the item.</p> <ul style="list-style-type: none"> - base type: string, <p>(XPath ACSDesAdvise/shipInfo/packages/handlingChar/garPack/garPackCode) 1-1 (XPath ACSDesAdvise/AAbody/AAitem/shipInfo/packages/handlingChar/garPack/garPackCode) 1-1</p>

garPackText	<p>a free text specifying the type of packaging used for the item.</p> <p>- base type: string, (XPath ACSDesAdvise/AAbody/AAitem/shipInfo/packages/handlingChar/garPack/garPackText) 1-1 (XPath ACSDesAdvise/shipInfo/packages/handlingChar/garPack/garPackText) 1-1</p>
grossWeight	<p>the gross weight, declared for transport or customs purpose</p> <p>- base type: decimal, min inclusive: 0, fraction digits: 2, (XPath ACSDesAdvise/AAbody/AAitem/shipInfo/transInfo/grossWeight) 0-1 (XPath ACSDesAdvise/AAbody/AAitem/shipInfo/actualPackageUnit/grossWeight) 0-1 (XPath ACSDesAdvise/shipInfo/actualPackageUnit/grossWeight) 0-1 (XPath ACSDesAdvise/AAbody/AAitem/shipInfo/packages/handlingChar/grossWeight) 0-1 (XPath ACSDesAdvise/shipInfo/packages/handlingChar/grossWeight) 0-1 (XPath ACSDesAdvise/shipInfo/transInfo/grossWeight) 0-1</p>
handlingType	<p>information to handle the item (eg "breakable").</p> <p>- base type: string, (XPath ACSDesAdvise/AAbody/AAitem/shipInfo/packages/handlingChar/handlingType) 0-1 (XPath ACSDesAdvise/shipInfo/packages/handlingChar/handlingType) 0-1</p>
height	<p>effective height of a specified object</p> <p>- base type: decimal, min inclusive: 0, fraction digits: 2, (XPath ACSDesAdvise/AAbody/AAitem/shipInfo/packages/packageDim/height) 0-1 (XPath ACSDesAdvise/AAbody/AAitem/shipInfo/actualPackageUnit/packageDim/height) 0-1 (XPath ACSDesAdvise/shipInfo/actualPackageUnit/packageDim/height) 0-1 (XPath ACSDesAdvise/shipInfo/packages/packageDim/height) 0-1</p>
id	<p>primary identification code of a Party; it is recommended the format: nation code (ISO 3166) + VAT identification number (11 crt), with the qualifier "numberingOrg"= MF</p> <p>- base type: string, max length: 15, (XPath ACSDesAdvise/TAheader/supplier/id) 1-1 (XPath ACSDesAdvise/TAheader/thirdParty/id) 1-1 (XPath ACSDesAdvise/TAheader/buyer/id) 1-1 (XPath ACSDesAdvise/AAbody/AAitem/thirdParty/id) 1-1</p>
@idQualifier	<p>Qualification of the identifier.</p> <p>- base type: string, (XPath ACSDesAdvise/AAbody/AAitem/shipInfo/actualPackageUnit/packagesList/packageIdentification/serialN/@idQualifier) [Optional] - nota: <i>this attribute should be used when the numberingOrg attribute is not enough to declare the type of serial identifier</i> (XPath ACSDesAdvise/AAbody/AAitem/csRange/sizeMatrix/sizeRow/itemsList/itemIdentification/serialN/@idQualifier) [Optional] - nota: <i>this attribute should be used when the numberingOrg attribute is not enough to declare the type of serial identifier</i> (XPath ACSDesAdvise/AAbody/AAitem/shipInfo/actualPackageUnit/packageIdentification/serialN/@idQualifier) [Optional] - nota: <i>this attribute should be used when the numberingOrg attribute is not enough to declare the type of serial identifier</i> (XPath ACSDesAdvise/TAheader/buyer/additionalIdentifier/@idQualifier) [Optional] - nota: <i>this attribute should be used when the numberingOrg attribute is not enough to declare the type of identifier</i> (XPath ACSDesAdvise/shipInfo/actualPackageUnit/packageIdentification/serialN/@idQualifier) [Optional]</p>

	<p>- nota: <i>this attribute should be used when the numberingOrg attribute is not enough to declare the type of serial identifier</i> (XPath <code>ACSDesAdvise/TAheader/supplier/additionalIdentifier/@idQualifier</code>) [Optional]</p> <p>- nota: <i>this attribute should be used when the numberingOrg attribute is not enough to declare the type of identifier</i> (XPath <code>ACSDesAdvise/shipInfo/actualPackageUnit/packagesList/packageIdentification/serialN/@idQualifier</code>) [Optional]</p> <p>- nota: <i>this attribute should be used when the numberingOrg attribute is not enough to declare the type of serial identifier</i> (XPath <code>ACSDesAdvise/AAbody/AAitem/shipInfo/actualPackageUnit/itemsList/itemIdentification/serialN/@idQualifier</code>) [Optional]</p> <p>- nota: <i>this attribute should be used when the numberingOrg attribute is not enough to declare the type of serial identifier</i> (XPath <code>ACSDesAdvise/AAbody/AAitem/itemsList/itemIdentification/serialN/@idQualifier</code>) [Optional]</p> <p>- nota: <i>this attribute should be used when the numberingOrg attribute is not enough to declare the type of serial identifier</i> (XPath <code>ACSDesAdvise/shipInfo/actualPackageUnit/itemsList/itemIdentification/serialN/@idQualifier</code>) [Optional]</p> <p>- nota: <i>this attribute should be used when the numberingOrg attribute is not enough to declare the type of serial identifier</i></p>
incoTerm	<p>specification of the terms of trade (INCOTERMS) - base type: string, cod. table: T3 http://www.ebiz.enea.it/moda-ml/repository/codelist/draft/gc_T3.xml (XPath <code>ACSDesAdvise/trade/incoTerm</code>) 1-1</p>
incoTermText	<p>free text specifying the terms of trade (incoterm, location) - base type: string, max length: 250, (XPath <code>ACSDesAdvise/trade/incoTermText</code>) 1-1</p>
@isURL	<p>it indicates if the referred element is an URL (true) or not (false) - base type: boolean, (XPath <code>ACSDesAdvise/TAheader/refDoc/attachment/externalReference/uri/@isURL</code>) [Optional] [Default= true] - nota: <i>usage of URLs is recommended</i> (XPath <code>ACSDesAdvise/AAbody/AAitem/refDoc/attachment/externalReference/uri/@isURL</code>) [Optional] [Default= true] - nota: <i>usage of URLs is recommended</i></p>
itemID	<p>number of the line/item of the referenced document - base type: string, max length: 6, (XPath <code>ACSDesAdvise/AAbody/AAitem/refDoc/itemID</code>) 0-1 (XPath <code>ACSDesAdvise/TAheader/refDoc/itemID</code>) 0-1</p>
itemsPerPackage	<p>the quantity of items that can be contained in a package. - base type: decimal, (XPath <code>ACSDesAdvise/AAbody/AAitem/shipInfo/packages/itemsPerPackage</code>) 0-1 (XPath <code>ACSDesAdvise/shipInfo/packages/itemsPerPackage</code>) 0-1</p>
label	<p>indicates if the physical object specified has to be labelled - base type: boolean, (XPath <code>ACSDesAdvise/shipInfo/packages/handlingChar/yarnPack/yarnInWrap/label</code>) 0-1 (XPath <code>ACSDesAdvise/AAbody/AAitem/shipInfo/packages/handlingChar/yarnPack/yarnInWrap/label</code>) 0-1 (XPath <code>ACSDesAdvise/shipInfo/packages/handlingChar/yarnPack/yarnReel/label</code>) 0-1 (XPath <code>ACSDesAdvise/AAbody/AAitem/shipInfo/packages/handlingChar/yarnPack/yarnReel/label</code>) 0-1</p>

labelWrit	<p>text that must be written on the lable of a specified physical object when its customization is required</p> <ul style="list-style-type: none"> - base type: string, max length: 350, (XPath ACSDesAdvise/AAbody/AAitem/shipInfo/packages/handlingChar/yarnPack/yarnReel/labelWrit) 0-1 (XPath ACSDesAdvise/shipInfo/packages/handlingChar/yarnPack/yarnReel/labelWrit) 0-1 (XPath ACSDesAdvise/shipInfo/packages/handlingChar/yarnPack/yarnInWrap/labelWrit) 0-1 (XPath ACSDesAdvise/AAbody/AAitem/shipInfo/packages/handlingChar/yarnPack/yarnInWrap/labelWrit) 0-1
legalName	<p>legal name of a Party</p> <ul style="list-style-type: none"> - base type: string, max length: 250, (XPath ACSDesAdvise/THeader/thirdParty/legalName) 0-1 (XPath ACSDesAdvise/THeader/buyer/legalName) 0-1 (XPath ACSDesAdvise/AAbody/AAitem/thirdParty/legalName) 0-1 (XPath ACSDesAdvise/THeader/supplier/legalName) 0-1
length	<p>effective length of a specified object</p> <ul style="list-style-type: none"> - base type: decimal, min inclusive: 0, fraction digits: 2, (XPath ACSDesAdvise/shipInfo/packages/packageDim/length) 1-1 - note: <i>here the maximum dimension must also be specified</i> (XPath ACSDesAdvise/shipInfo/actualPackageUnit/packageDim/length) 1-1 - note: <i>here the maximum dimension must also be specified</i> (XPath ACSDesAdvise/AAbody/AAitem/shipInfo/packages/packageDim/length) 1-1 - note: <i>here the maximum dimension must also be specified</i> (XPath ACSDesAdvise/AAbody/AAitem/shipInfo/actualPackageUnit/packageDim/length) 1-1 - note: <i>here the maximum dimension must also be specified</i>
lineID	<p>unique identifier of the line item of the business document; it is set by the role that produces the document.</p> <ul style="list-style-type: none"> - base type: string, max length: 30, (XPath ACSDesAdvise/AAbody/AAitem/lineID) 0-1
lineN	<p>number of the line item of the present message (xml document); it is set by the role that produces the document. Usually it is a progressive number, but not always.</p> <ul style="list-style-type: none"> - base type: positiveInteger, min inclusive: 1, max inclusive: 9999, (XPath ACSDesAdvise/AAbody/AAitem/lineN) 1-1
@listName	<p>the name of the list of codes used to make an instance of the element (it might be thought as descriptive element, i.e. 'fabric printing technologies', or not, i.e. "T264")</p> <ul style="list-style-type: none"> - base type: string, max length: 40, (XPath ACSDesAdvise/AAbody/AAitem/acsCode/pattern/@listName) [Optional] - nota: <i>this attribute should always be used coupled with "numberingOrg"</i> (XPath ACSDesAdvise/AAbody/AAitem/csRange/sizeMatrix/sizeRow/itemsList/qualityLevel/@listName) [Optional] (XPath ACSDesAdvise/AAbody/AAitem/csRange/garmentVariant/variantType/@listName) [Optional] - nota: <i>this attribute should always be used coupled with "numberingOrg"</i> (XPath ACSDesAdvise/AAbody/AAitem/itemsList/qualityLevel/@listName) [Optional] (XPath ACSDesAdvise/AAbody/AAitem/csRange/color/@listName) [Optional] - nota: <i>this attribute should always be used coupled with "numberingOrg"</i> (XPath ACSDesAdvise/AAbody/AAitem/acsCode/color/@listName) [Optional] - nota: <i>this attribute should always be used coupled with "numberingOrg"</i> (XPath ACSDesAdvise/AAbody/AAitem/shipInfo/actualPackageUnit/itemsList/qualityLevel/@listName) [Optional] (XPath ACSDesAdvise/AAbody/AAitem/csRange/sizeMatrix/sizeRow/additionalComponentCode/@listName) [Optional] (XPath ACSDesAdvise/THeader/refDoc/season/@listName) [Optional]

	<p>(XPath ACSDesAdvise/AAbody/AAitem/refDoc/season/@listName) [Optional] (XPath ACSDesAdvise/shipInfo/actualPackageUnit/itemsList/qualityLevel/@listName) [Optional] (XPath ACSDesAdvise/AAbody/AAitem/csRange/garmentVariant/variantCode/@listName) [Optional] - nota: <i>this attribute should always be used coupled with “numberingOrg”</i> (XPath ACSDesAdvise/AAbody/AAitem/acsCode/art/@listName) [Optional] - nota: <i>this attribute should always be used coupled with “numberingOrg”</i></p>
@listVersion	<p>it specifies the version of the list of codes used to make an instance of the element - base type: string, max length: 6, (XPath ACSDesAdvise/TAheader/refDoc/season/@listVersion) [Optional] (XPath ACSDesAdvise/AAbody/AAitem/acsCode/color/@listVersion) [Optional] - nota: <i>this attribute should always be used coupled with “numberingOrg” and “listName”</i> (XPath ACSDesAdvise/AAbody/AAitem/acsCode/art/@listVersion) [Optional] - nota: <i>this attribute should always be used coupled with “numberingOrg” and “listName”</i> (XPath ACSDesAdvise/AAbody/AAitem/acsCode/pattern/@listVersion) [Optional] - nota: <i>this attribute should always be used coupled with “numberingOrg” and “listName”</i> (XPath ACSDesAdvise/AAbody/AAitem/itemsList/qualityLevel/@listVersion) [Optional] (XPath ACSDesAdvise/shipInfo/actualPackageUnit/itemsList/qualityLevel/@listVersion) [Optional] (XPath ACSDesAdvise/AAbody/AAitem/csRange/garmentVariant/variantCode/@listVersion) [Optional] - nota: <i>this attribute should always be used coupled with “numberingOrg” and “listName”</i> (XPath ACSDesAdvise/AAbody/AAitem/refDoc/season/@listVersion) [Optional] (XPath ACSDesAdvise/AAbody/AAitem/csRange/sizeMatrix/sizeRow/additionalComponentCode/@listVersion) [Optional] (XPath ACSDesAdvise/AAbody/AAitem/csRange/garmentVariant/variantType/@listVersion) [Optional] - nota: <i>this attribute should always be used coupled with “numberingOrg” and “listName”</i> (XPath ACSDesAdvise/AAbody/AAitem/csRange/sizeMatrix/sizeRow/itemsList/qualityLevel/@listVersion) [Optional] (XPath ACSDesAdvise/AAbody/AAitem/shipInfo/actualPackageUnit/itemsList/qualityLevel/@listVersion) [Optional] (XPath ACSDesAdvise/AAbody/AAitem/csRange/color/@listVersion) [Optional] - nota: <i>this attribute should always be used coupled with “numberingOrg” and “listName”</i></p>
@ln	<p>Language code. - base type: string, (XPath ACSDesAdvise/shipInfo/packages/handlingChar/handlingType/@ln) [Optional] (XPath ACSDesAdvise/shipInfo/packages/description/@ln) [Optional] (XPath ACSDesAdvise/AAbody/AAitem/shipInfo/packages/handlingChar/handlingType/@ln) [Optional] (XPath ACSDesAdvise/AAbody/AAitem/shipInfo/packages/description/@ln) [Optional] (XPath ACSDesAdvise/AAbody/AAitem/acsCode/description/@ln) [Optional]</p>
location	<p>specification of a location - base type: string, max length: 40, (XPath ACSDesAdvise/trade/location) 0-1 - note: <i>place to which the INCOTERM applies</i></p>
@logo	<p>company logo (URL of the image jpeg or gif). It is recommended that the width of the image does not exceed 640 pixel. - base type: string, max length: 255, (XPath ACSDesAdvise/TAheader/supplier/@logo) [Optional]</p>

	(XPath ACSDesAdvise/TAheader/buyer/@logo) [Optional]
lotN	lot number of a product or batch number of the raw material - base type: string, max length: 15, (XPath ACSDesAdvise/AAbody/AAitem/lotN) 0-2
@LRI	attribute usable to format a string according to a customized User rule (local rule) - base type: string, cod. table: NT3 http://www.ebiz.enea.it/moda-ml/repository/codelist/draft/gc_NT3.xml (XPath ACSDesAdvise/trade/location/@LRI) [Optional]
@mime	the mime type of the binary object - base type: normalizedString, (XPath ACSDesAdvise/AAbody/AAitem/refDoc/attachment/binaryObject/@mime) [Optional] (XPath ACSDesAdvise/TAheader/refDoc/attachment/binaryObject/@mime) [Optional]
mimeCode	mime type of the external object - base type: normalizedString, (XPath ACSDesAdvise/AAbody/AAitem/refDoc/attachment/externalReference/mimeCode) 0-1 (XPath ACSDesAdvise/TAheader/refDoc/attachment/externalReference/mimeCode) 0-1
minItemsPerPackage	the minimum quantity of items for the specified kind of package. - base type: decimal, min inclusive: 0, (XPath ACSDesAdvise/shipInfo/packages/minItemsPerPackage) 0-1 (XPath ACSDesAdvise/AAbody/AAitem/shipInfo/packages/minItemsPerPackage) 0-1
msgDate	date of issue of the present message (xml document), according to one of the patterns YYYY-MM-DD, YYYY-MM-DD:HH-MM or YYYY-WW. - base type: string, (XPath ACSDesAdvise/TAheader/msgDate) 1-1
@msgfunction	function performed by the present message with regards to the transmission - base type: string, cod. table: NT18 http://www.ebiz.enea.it/moda-ml/repository/codelist/draft/gc_NT18.xml (XPath ACSDesAdvise/@msgfunction) [Optional] [Default= OR]
msgID	key identifier of the business document in the information system of the issuing Party. In case of more despatches of the same business document, it is unchanged. - base type: string, max length: 35, (XPath ACSDesAdvise/TAheader/msgID) 0-1
msgN	identification number given to the message (xml document) by its issuer. In case of more despatches of the same business document, it changes. - base type: string, max length: 35, (XPath ACSDesAdvise/TAheader/msgN) 1-1
netWeight	the net weight declared for transport or customs purpose - base type: decimal, min inclusive: 0, fraction digits: 2, (XPath ACSDesAdvise/AAbody/AAitem/shipInfo/packages/handlingChar/netWeight) 0-1 (XPath ACSDesAdvise/shipInfo/transInfo/netWeight) 0-1 (XPath ACSDesAdvise/AAbody/AAitem/shipInfo/actualPackageUnit/netWeight) 0-1 (XPath ACSDesAdvise/shipInfo/actualPackageUnit/netWeight) 0-1 (XPath ACSDesAdvise/shipInfo/packages/handlingChar/netWeight) 0-1 (XPath ACSDesAdvise/AAbody/AAitem/shipInfo/transInfo/netWeight) 0-1
note	free text or structured (computer processing) note. For note structuring use the attributes "noteLabel" and "codelist" - base type: string, max length: 350,

	<p>(XPath ACSDesAdvise/shipInfo/actualPackageUnit/note) 0-99 (XPath ACSDesAdvise/shipInfo/packages/handlingChar/note) 0-99 (XPath ACSDesAdvise/AAbody/AAitem/shipInfo/actualPackageUnit/note) 0-99 (XPath ACSDesAdvise/THeader/note) 0-99 (XPath ACSDesAdvise/AAbody/AAitem/shipInfo/packages/handlingChar/note) 0-99 (XPath ACSDesAdvise/AAbody/AAitem/note) 0-99</p>
@noteLabel	<p>subject qualifier of a note - base type: string, max length: 35, (XPath ACSDesAdvise/AAbody/AAitem/shipInfo/actualPackageUnit/note/@noteLabel) [Optional] - nota: <i>must be used to qualify the subject of the note</i> (XPath ACSDesAdvise/shipInfo/actualPackageUnit/note/@noteLabel) [Optional] - nota: <i>must be used to qualify the subject of the note</i> (XPath ACSDesAdvise/AAbody/AAitem/note/@noteLabel) [Optional] - nota: <i>must be used to qualify the subject of the note</i> (XPath ACSDesAdvise/AAbody/AAitem/shipInfo/packages/handlingChar/note/@noteLabel) [Optional] - nota: <i>must be used to qualify the subject of the note</i> (XPath ACSDesAdvise/THeader/note/@noteLabel) [Optional] - nota: <i>must be used to qualify the subject of the note</i> (XPath ACSDesAdvise/shipInfo/packages/handlingChar/note/@noteLabel) [Optional] - nota: <i>must be used to qualify the subject of the note</i></p>
@numberingOrg	<p>code specifying the organisation who has created or owns the coding or numbering system - base type: string, cod. table: NT6 http://www.ebiz.enea.it/moda-ml/repository/codelist/draft/gc_NT6.xml (XPath ACSDesAdvise/shipInfo/packages/EPCList/EPC/@numberingOrg) [Optional] (XPath ACSDesAdvise/AAbody/AAitem/shipInfo/actualPackageUnit/packagesList/packageIdentification/serialN/@numberingOrg) [Optional] - nota: <i>here the issuer of the serial number must be specified (when different from the Supplier)</i> (XPath ACSDesAdvise/AAbody/AAitem/csRange/sizeMatrix/sizeRow/additionalComponentCode/@numberingOrg) [Optional] (XPath ACSDesAdvise/shipInfo/actualPackageUnit/packageModelCode/@numberingOrg) [Optional] (XPath ACSDesAdvise/THeader/docID/@numberingOrg) [Optional] - nota: <i>here can be specified whose document numbering is used (e.g.: Client, Supplier, ..)</i> (XPath ACSDesAdvise/AAbody/AAitem/shipInfo/packages/packageModelCode/@numberingOrg) [Optional] (XPath ACSDesAdvise/shipInfo/actualPackageUnit/itemsList/qualityLevel/@numberingOrg) [Optional] (XPath ACSDesAdvise/THeader/note/@numberingOrg) [Optional] (XPath ACSDesAdvise/AAbody/AAitem/csRange/garmentVariant/variantCode/@numberingOrg) [Optional] - nota: <i>this attribute should be used either single or coupled with "listName" and "listVersion"</i> (XPath ACSDesAdvise/AAbody/AAitem/shipInfo/packages/handlingChar/note/@numberingOrg) [Optional] (XPath ACSDesAdvise/shipInfo/actualPackageUnit/itemsList/itemIdentification/serialN/@numberingOrg) [Optional] - nota: <i>here the issuer of the serial number must be specified (when different from the Supplier)</i> (XPath ACSDesAdvise/AAbody/AAitem/refDoc/season/@numberingOrg) [Optional] (XPath ACSDesAdvise/shipInfo/actualPackageUnit/packagesList/packageIdentification/serialN/@numberingOrg) [Optional] - nota: <i>here the issuer of the serial number must be specified (when different from the Supplier)</i> (XPath ACSDesAdvise/AAbody/AAitem/lotN/@numberingOrg) [Optional]</p>

	<p>(XPath ACSDesAdvise/THeader/refDoc/docID/@numberingOrg) [Optional] - nota: <i>here can be specified whose document numbering is used (e.g.: Client, Supplier, ..)</i></p> <p>(XPath ACSDesAdvise/AAbody/AAitem/csRange/sizeMatrix/sizeRow/itemsList/itemIdentification/serialN/@numberingOrg) [Optional] - nota: <i>here the issuer of the serial number must be specified (when different from the Supplier)</i></p> <p>(XPath ACSDesAdvise/AAbody/AAitem/shipInfo/actualPackageUnit/note/@numberingOrg) [Optional] (XPath ACSDesAdvise/AAbody/AAitem/thirdParty/id/@numberingOrg) [Optional] (XPath ACSDesAdvise/AAbody/AAitem/shipInfo/actualPackageUnit/itemsList/itemIdentification/serialN/@numberingOrg) [Optional] - nota: <i>here the issuer of the serial number must be specified (when different from the Supplier)</i></p> <p>(XPath ACSDesAdvise/shipInfo/packages/handlingChar/note/@numberingOrg) [Optional] (XPath ACSDesAdvise/AAbody/AAitem/shipInfo/actualPackageUnit/packagesList/packageIdentification/packageN/@numberingOrg) [Optional] (XPath ACSDesAdvise/AAbody/AAitem/csRange/sizeMatrix/sizeRow/itemsList/qualityLevel/@numberingOrg) [Optional] (XPath ACSDesAdvise/THeader/thirdParty/id/@numberingOrg) [Optional] (XPath ACSDesAdvise/shipInfo/actualPackageUnit/packageIdentification/packageN/@numberingOrg) [Optional] (XPath ACSDesAdvise/THeader/buyer/id/@numberingOrg) [Optional] (XPath ACSDesAdvise/shipInfo/actualPackageUnit/packageIdentification/serialN/@numberingOrg) [Optional] - nota: <i>here the issuer of the serial number must be specified (when different from the Supplier)</i></p> <p>(XPath ACSDesAdvise/THeader/buyer/additionalIdentifier/@numberingOrg) [Optional] - nota: <i>here the issuer of the identifier must be specified</i></p> <p>(XPath ACSDesAdvise/shipInfo/actualPackageUnit/packagesList/packageIdentification/packageN/@numberingOrg) [Optional] (XPath ACSDesAdvise/AAbody/AAitem/shipInfo/actualPackageUnit/packageModelCode/@numberingOrg) [Optional] (XPath ACSDesAdvise/AAbody/AAitem/acsCode/color/@numberingOrg) [Optional] - nota: <i>this attribute should be used either single or coupled with "listName" and "listVersion"</i></p> <p>(XPath ACSDesAdvise/AAbody/AAitem/itemsList/qualityLevel/@numberingOrg) [Optional] (XPath ACSDesAdvise/THeader/refDoc/attachment/fileName/@numberingOrg) [Optional] (XPath ACSDesAdvise/AAbody/AAitem/shipInfo/packages/packageN/@numberingOrg) [Optional] (XPath ACSDesAdvise/AAbody/AAitem/acsCode/pattern/@numberingOrg) [Optional] - nota: <i>this attribute should be used either single or coupled with "listName" and "listVersion"</i></p> <p>(XPath ACSDesAdvise/AAbody/AAitem/packageN/@numberingOrg) [Optional] (XPath ACSDesAdvise/AAbody/AAitem/acsCode/added/@numberingOrg) [Optional] (XPath ACSDesAdvise/THeader/supplier/id/@numberingOrg) [Optional] (XPath ACSDesAdvise/shipInfo/packages/packageModelCode/@numberingOrg) [Optional] (XPath ACSDesAdvise/AAbody/AAitem/shipInfo/packages/EPClist/EPC/@numberingOrg) [Optional] (XPath ACSDesAdvise/AAbody/AAitem/itemsList/itemIdentification/serialN/@numberingOrg) [Optional] - nota: <i>here the issuer of the serial number must be specified (when different from the Supplier)</i></p>
--	---

	<p>(XPath ACSDesAdvise/THeader/supplier/additionalIdentifier/@numberingOrg) [Optional]</p> <p>- nota: <i>here the issuer of the identifier must be specified</i></p> <p>(XPath ACSDesAdvise/AAbody/AAitem/note/@numberingOrg) [Optional]</p> <p>(XPath ACSDesAdvise/AAbody/AAitem/shipInfo/actualPackageUnit/itemsList/qualityLevel/@numberingOrg) [Optional]</p> <p>(XPath ACSDesAdvise/shipInfo/actualPackageUnit/note/@numberingOrg) [Optional]</p> <p>(XPath ACSDesAdvise/AAbody/AAitem/EPC/@numberingOrg) [Optional]</p> <p>(XPath ACSDesAdvise/AAbody/AAitem/csRange/color/@numberingOrg) [Optional]</p> <p>- nota: <i>this attribute should be used either single or coupled with "listName" and "listVersion"</i></p> <p>(XPath ACSDesAdvise/AAbody/AAitem/shipInfo/actualPackageUnit/packageIdentification/serialN/@numberingOrg) [Optional]</p> <p>- nota: <i>here the issuer of the serial number must be specified (when different from the Supplier)</i></p> <p>(XPath ACSDesAdvise/AAbody/AAitem/csRange/garmentVariant/variantType/@numberingOrg) [Optional]</p> <p>- nota: <i>this attribute should be used either single or coupled with "listName" and "listVersion"</i></p> <p>(XPath ACSDesAdvise/AAbody/AAitem/shipInfo/actualPackageUnit/packageIdentification/packageN/@numberingOrg) [Optional]</p> <p>(XPath ACSDesAdvise/AAbody/AAitem/acsCode/@numberingOrg) [Optional]</p> <p>(XPath ACSDesAdvise/THeader/refDoc/season/@numberingOrg) [Optional]</p> <p>(XPath ACSDesAdvise/AAbody/AAitem/refDoc/docID/@numberingOrg) [Optional]</p> <p>- nota: <i>here can be specified whose document numbering is used (e.g.: Client, Supplier, ..)</i></p> <p>(XPath ACSDesAdvise/AAbody/AAitem/csRange/@numberingOrg) [Optional]</p> <p>(XPath ACSDesAdvise/shipInfo/packages/packageN/@numberingOrg) [Optional]</p> <p>(XPath ACSDesAdvise/AAbody/AAitem/acsCode/art/@numberingOrg) [Optional]</p> <p>- nota: <i>this attribute should be used either single or coupled with "listName" and "listVersion"</i></p> <p>(XPath ACSDesAdvise/AAbody/AAitem/refDoc/attachment/fileName/@numberingOrg) [Optional]</p>
package	<p>code specifying the type of transport package</p> <p>- base type: string, cod. table: T11</p> <p>http://www.ebiz.enea.it/moda-ml/repository/codelist/draft/gc_T11.xml</p> <p>(XPath ACSDesAdvise/shipInfo/packages/package) 1-1</p> <p>(XPath ACSDesAdvise/shipInfo/actualPackageUnit/package) 0-1</p> <p>(XPath ACSDesAdvise/AAbody/AAitem/shipInfo/actualPackageUnit/package) 0-1</p> <p>(XPath ACSDesAdvise/AAbody/AAitem/shipInfo/packages/package) 1-1</p>
@packageContainerN	<p>reference usable to indicate the outer package containing this package</p> <p>- base type: string, max length: 40,</p> <p>(XPath ACSDesAdvise/AAbody/AAitem/packageN/@packageContainerN) [Optional]</p> <p>(XPath ACSDesAdvise/shipInfo/packages/packageN/@packageContainerN) [Optional]</p> <p>(XPath ACSDesAdvise/AAbody/AAitem/shipInfo/actualPackageUnit/packagesList/packageIdentification/packageN/@packageContainerN) [Optional]</p> <p>(XPath ACSDesAdvise/shipInfo/actualPackageUnit/packageIdentification/packageN/@packageContainerN) [Optional]</p> <p>(XPath ACSDesAdvise/shipInfo/actualPackageUnit/packagesList/packageIdentification/packageN/@packageContainerN) [Optional]</p> <p>(XPath ACSDesAdvise/AAbody/AAitem/shipInfo/packages/packageN/@packageContainerN) [Optional]</p> <p>(XPath ACSDesAdvise/AAbody/AAitem/shipInfo/actualPackageUnit/packageIdentification/packageN/@packageContainerN) [Optional]</p>

@packageLevel	<p>level used to indicate the hierarchical structure of the packages (from outer to inner levels)</p> <p>- base type: positiveInteger, min inclusive: 1, max inclusive: 9, (XPath ACSDesAdvise/AAbody/AAitem/shipInfo/packages/@packageLevel) [Optional]</p> <p>- nota: <i>number fixing the level of the package in the transport structure (from inner to outer). Must either be used for all package types or not be used</i> (XPath ACSDesAdvise/shipInfo/actualPackageUnit/@packageLevel) [Optional] (XPath ACSDesAdvise/shipInfo/packages/@packageLevel) [Optional]</p> <p>- nota: <i>number fixing the level of the package in the transport structure (from inner to outer). Must either be used for all package types or not be used</i> (XPath ACSDesAdvise/AAbody/AAitem/shipInfo/actualPackageUnit/@packageLevel) [Optional]</p>
packageModelCode	<p>a code (eg a barcode) identifying the type of packaging</p> <p>- base type: string, (XPath ACSDesAdvise/shipInfo/packages/packageModelCode) 0-1 (XPath ACSDesAdvise/AAbody/AAitem/shipInfo/packages/packageModelCode) 0-1 (XPath ACSDesAdvise/AAbody/AAitem/shipInfo/actualPackageUnit/packageModelCode) 0-1 (XPath ACSDesAdvise/shipInfo/actualPackageUnit/packageModelCode) 0-1</p>
packageN	<p>serial number used to identify a transport package</p> <p>- base type: string, max length: 40, (XPath ACSDesAdvise/AAbody/AAitem/shipInfo/actualPackageUnit/packagesList/packageIdentification/packageN) 1-1 (XPath ACSDesAdvise/AAbody/AAitem/shipInfo/packages/packageN) 0-unbounded</p> <p>- note: <i>here the serial no.s of the packages can be identified</i> (XPath ACSDesAdvise/shipInfo/packages/packageN) 0-unbounded</p> <p>- note: <i>here the serial no.s of the packages can be identified</i> (XPath ACSDesAdvise/shipInfo/actualPackageUnit/packagesList/packageIdentification/packageN) 1-1 (XPath ACSDesAdvise/shipInfo/actualPackageUnit/packageIdentification/packageN) 1-1 (XPath ACSDesAdvise/AAbody/AAitem/packageN) 0-unbounded (XPath ACSDesAdvise/AAbody/AAitem/shipInfo/actualPackageUnit/packageIdentification/packageN) 1-1</p>
packageQty	<p>quantity of the specified transport packages</p> <p>- base type: positiveInteger, (XPath ACSDesAdvise/AAbody/AAitem/shipInfo/packages/packageQty) 0-1</p> <p>- note: <i>total for the type of package</i> (XPath ACSDesAdvise/shipInfo/packages/packageQty) 0-1</p> <p>- note: <i>total for the type of package</i></p>
packageText	<p>denomination of the type of transport package (text)</p> <p>- base type: string, max length: 80, (XPath ACSDesAdvise/shipInfo/actualPackageUnit/packageText) 0-1 (XPath ACSDesAdvise/shipInfo/packages/packageText) 1-1 (XPath ACSDesAdvise/AAbody/AAitem/shipInfo/packages/packageText) 1-1 (XPath ACSDesAdvise/AAbody/AAitem/shipInfo/actualPackageUnit/packageText) 0-1</p>
pattern	<p>pattern/design number of the product, when not included in the article code</p> <p>- base type: string, max length: 15, (XPath ACSDesAdvise/AAbody/AAitem/acsCode/pattern) 0-1</p>
person	<p>name of the contact person within a Party</p> <p>- base type: string, max length: 40, (XPath ACSDesAdvise/TAheader/buyer/person) 0-1 (XPath ACSDesAdvise/AAbody/AAitem/thirdParty/person) 0-1</p>

	(XPath ACSDesAdvise/THeader/supplier/person) 0-1 (XPath ACSDesAdvise/THeader/thirdParty/person) 0-1
@phone	phone number of the contact person within a Party - base type: string, max length: 35, (XPath ACSDesAdvise/THeader/supplier/person/@phone) [Optional] (XPath ACSDesAdvise/THeader/thirdParty/person/@phone) [Optional] (XPath ACSDesAdvise/THeader/buyer/person/@phone) [Optional] (XPath ACSDesAdvise/AABody/AAitem/thirdParty/person/@phone) [Optional]
pieceInnWrap1	code specifying the type of inner wrapping/packing used for the fabric piece - base type: string, cod. table: T4 http://www.ebiz.enea.it/moda-ml/repository/codelist/draft/gc_T4.xml (XPath ACSDesAdvise/AABody/AAitem/shipInfo/packages/handlingChar/piecePack/pieceInnWrap1) 1-1 (XPath ACSDesAdvise/shipInfo/packages/handlingChar/piecePack/pieceInnWrap1) 1-1
pieceInnWrap2	code sub-specifying the type of inner wrapping/packing used for the fabric piece - base type: string, cod. table: T5 http://www.ebiz.enea.it/moda-ml/repository/codelist/draft/gc_T5.xml (XPath ACSDesAdvise/shipInfo/packages/handlingChar/piecePack/pieceInnWrap2) 0-1 (XPath ACSDesAdvise/AABody/AAitem/shipInfo/packages/handlingChar/piecePack/pieceInnWrap2) 0-1
pieceOutWrap	code specifying the type of outer wrapping or packing used for the fabric piece - base type: string, cod. table: T6 http://www.ebiz.enea.it/moda-ml/repository/codelist/draft/gc_T6.xml (XPath ACSDesAdvise/shipInfo/packages/handlingChar/piecePack/pieceOutWrap) 0-1 (XPath ACSDesAdvise/AABody/AAitem/shipInfo/packages/handlingChar/piecePack/pieceOutWrap) 0-1
piecePackText	free text specifying the type of wrapping or packing used for the fabric piece - base type: string, max length: 250, (XPath ACSDesAdvise/AABody/AAitem/shipInfo/packages/handlingChar/piecePack/piecePackText) 1-1 (XPath ACSDesAdvise/shipInfo/packages/handlingChar/piecePack/piecePackText) 1-1
postCode	code defining the postal zone - base type: string, max length: 10, (XPath ACSDesAdvise/THeader/supplier/postCode) 0-1 (XPath ACSDesAdvise/THeader/thirdParty/postCode) 0-1 (XPath ACSDesAdvise/THeader/buyer/postCode) 0-1 (XPath ACSDesAdvise/AABody/AAitem/thirdParty/postCode) 0-1
@progr	progressive number in the sequence - base type: positiveInteger, min inclusive: 1, (XPath ACSDesAdvise/AABody/AAitem/shipInfo/packages/illingCriterion/@progr) [Optional] (XPath ACSDesAdvise/shipInfo/transInfo/@progr) [Optional] - nota: <i>Indicates the position of the leg in a sequence of transport legs.</i> (XPath ACSDesAdvise/AABody/AAitem/shipInfo/transInfo/@progr) [Optional] - nota: <i>Indicates the position of the leg in a sequence of transport legs.</i> (XPath ACSDesAdvise/shipInfo/packages/illingCriterion/@progr) [Optional]
qty	net quantity of the article or object correlated, qualified by the function of the document (ordering, delivering, ..) and by the context - base type: decimal, min inclusive: 0, fraction digits: 2, (XPath ACSDesAdvise/AABody/AAitem/qty) 1-2 <hr/> AAAA-WARNING! - text not AVAILABLE n. 245 - In=en (XPath ACSDesAdvise/AABody/AAitem/csRange/sizeMatrix/sizeRow/qty) 0-1

qualityLevel	<p>the product quality level (first choice, second choice,...).</p> <p>- base type: string, (XPath ACSDesAdvise/AAbody/AAitem/itemsList/qualityLevel) 0-1 (XPath ACSDesAdvise/AAbody/AAitem/shipInfo/actualPackageUnit/itemsList/qualityLevel) 0-1 (XPath ACSDesAdvise/shipInfo/actualPackageUnit/itemsList/qualityLevel) 0-1 (XPath ACSDesAdvise/AAbody/AAitem/csRange/sizeMatrix/sizeRow/itemsList/qualityLevel) 0-1</p>
@reelMat	<p>type of material of which a package for yarn is made</p> <p>- base type: string, cod. table: T30 http://www.ebiz.enea.it/moda-ml/repository/codelist/draft/gc_T30.xml (XPath ACSDesAdvise/shipInfo/packages/handlingChar/yarnPack/yarnReel/@reelMat) [Optional] (XPath ACSDesAdvise/AAbody/AAitem/shipInfo/packages/handlingChar/yarnPack/yarnReel/@reelMat) [Optional]</p>
@reelType	<p>type of package used for a yarn product</p> <p>- base type: string, cod. table: T29 http://www.ebiz.enea.it/moda-ml/repository/codelist/draft/gc_T29.xml (XPath ACSDesAdvise/shipInfo/packages/handlingChar/yarnPack/yarnReel/@reelType) [Required] (XPath ACSDesAdvise/AAbody/AAitem/shipInfo/packages/handlingChar/yarnPack/yarnReel/@reelType) [Required]</p>
@role	<p>Third Party role qualifier</p> <p>- base type: string, cod. table: NT2 http://www.ebiz.enea.it/moda-ml/repository/codelist/draft/gc_NT2.xml (XPath ACSDesAdvise/AAbody/AAitem/thirdParty/@role) [Required] (XPath ACSDesAdvise/TAheader/thirdParty/@role) [Required]</p>
season	<p>sale season; defined as: season (1 crt) + year (4 crt) - season: S/S=1 A/W=2 Spring=3 Summer=4 Autumn=5 Winter=6: for more than four seasons use alphabetic sequence: 1st season=A 2nd season=B etc.etc.</p> <p>- base type: string, max length: 15, (XPath ACSDesAdvise/TAheader/refDoc/season) 0-1 - note: <i>here indicates the season to which the referenced document belongs</i> (XPath ACSDesAdvise/AAbody/AAitem/refDoc/season) 0-1 - note: <i>here indicates the season to which the referenced document belongs</i></p>
@sender	<p>qualifier that specifies the Party issuing of the document</p> <p>- base type: boolean, (XPath ACSDesAdvise/TAheader/thirdParty/@sender) [Optional] - nota: <i>This attribute is mandatory when the STYLESHEET must be used</i> (XPath ACSDesAdvise/TAheader/supplier/@sender) [Optional] - nota: <i>This attribute is mandatory when the STYLESHEET must be used</i> (XPath ACSDesAdvise/AAbody/AAitem/thirdParty/@sender) [Optional] - nota: <i>This attribute is mandatory when the STYLESHEET must be used</i> (XPath ACSDesAdvise/TAheader/buyer/@sender) [Optional] - nota: <i>This attribute is mandatory when the STYLESHEET must be used</i></p>
serialN	<p>serial number used for the identification of a physical unit</p> <p>- base type: string, max length: 250, (XPath ACSDesAdvise/shipInfo/actualPackageUnit/itemsList/itemIdentification/serialN) 1-9</p> <hr/> <p>AAAA-WARNING! - text not AVAILABLE n. 245 - In=en - note: <i>multiple values of serialN are allowed for different representations of the serial identifier of the same product unit. Instances of serialN must differ at least for one value of numberingOrg and idQualifier.</i> (XPath ACSDesAdvise/AAbody/AAitem/itemsList/itemIdentification/serialN) 1-9</p> <hr/> <p>AAAA-WARNING! - text not AVAILABLE n. 245 - In=en - note: <i>multiple values of serialN are allowed for different representations of the serial identifier of the same product unit. Instances of serialN must differ at least for one value of numberingOrg and idQualifier.</i></p>

	<p>(XPath ACSDesAdvise/shipInfo/actualPackageUnit/packagesList/packageIdentification/serialN) 0-9</p> <p>- note: multiple values of serialN are allowed in order to provide different representations of the serial identifier of the same package unit. Different instances of serialN must differ at least for one value of idQualifier or numberingOrg</p> <p>(XPath ACSDesAdvise/AAbody/AAitem/shipInfo/actualPackageUnit/packageIdentification/serialN) 0-9</p> <p>- note: multiple values of serialN are allowed in order to provide different representations of the serial identifier of the same package unit. Different instances of serialN must differ at least for one value of idQualifier or numberingOrg</p> <p>(XPath ACSDesAdvise/AAbody/AAitem/shipInfo/actualPackageUnit/itemsList/itemIdentification/serialN) 1-9</p> <hr/> <p>AAAA-WARNING! - text not AVAILABLE n. 245 - In=en</p> <p>- note: multiple values of serialN are allowed for different representations of the serial identifier of the same product unit. Instances of serialN must differ at least for one value of numberingOrg and idQualifier.</p> <p>(XPath ACSDesAdvise/AAbody/AAitem/csRange/sizeMatrix/sizeRow/itemsList/itemIdentification/serialN) 1-9</p> <hr/> <p>AAAA-WARNING! - text not AVAILABLE n. 245 - In=en</p> <p>- note: multiple values of serialN are allowed for different representations of the serial identifier of the same product unit. Instances of serialN must differ at least for one value of numberingOrg and idQualifier.</p> <p>(XPath ACSDesAdvise/shipInfo/actualPackageUnit/packageIdentification/serialN) 0-9</p> <p>- note: multiple values of serialN are allowed in order to provide different representations of the serial identifier of the same package unit. Different instances of serialN must differ at least for one value of idQualifier or numberingOrg</p> <p>(XPath ACSDesAdvise/AAbody/AAitem/shipInfo/actualPackageUnit/packagesList/packageIdentification/serialN) 0-9</p> <p>- note: multiple values of serialN are allowed in order to provide different representations of the serial identifier of the same package unit. Different instances of serialN must differ at least for one value of idQualifier or numberingOrg</p>
size	<p>size number of a fashion product (knitwear, clothing, ..)</p> <p>- base type: string, max length: 15,</p> <p>(XPath ACSDesAdvise/AAbody/AAitem/csRange/sizeMatrix/sizeRow/size) 1-1</p>
@sizeSystemBase	<p>base of the size system</p> <p>- base type: string, cod. table: T423</p> <p>http://www.ebiz.enea.it/moda-ml/repository/codelist/draft/gc_T423.xml</p> <p>(XPath ACSDesAdvise/AAbody/AAitem/csRange/@sizeSystemBase) [Optional]</p>
@sizeSystemID	<p>the identifier of the size system.</p> <p>- base type: string,</p> <p>(XPath ACSDesAdvise/AAbody/AAitem/csRange/@sizeSystemID) [Optional]</p>
@sizeSystemNat	<p>nation or agency identifying the size system</p> <p>- base type: string, cod. table: T421</p> <p>http://www.ebiz.enea.it/moda-ml/repository/codelist/draft/gc_T421.xml</p> <p>(XPath ACSDesAdvise/AAbody/AAitem/csRange/@sizeSystemNat) [Optional]</p>
@sizeSystemSeg	<p>market segment identifying the size system</p> <p>- base type: string, cod. table: T422</p> <p>http://www.ebiz.enea.it/moda-ml/repository/codelist/draft/gc_T422.xml</p> <p>(XPath ACSDesAdvise/AAbody/AAitem/csRange/@sizeSystemSeg) [Optional]</p>
sortableIndicator	<p>It states if the item can be automatically sorted.</p> <p>- base type: boolean,</p> <p>(XPath ACSDesAdvise/shipInfo/packages/handlingChar/sortableIndicator) 0-1</p> <p>(XPath ACSDesAdvise/AAbody/AAitem/shipInfo/packages/handlingChar/sortableIndicator) 0-1</p>
stackabilityLevel	<p>This value indicates the level at which the item can be stacked.</p> <p>- base type: integer,</p> <p>(XPath ACSDesAdvise/AAbody/AAitem/shipInfo/packages/handlingChar/stackabilityLevel) 0-1</p> <p>(XPath ACSDesAdvise/shipInfo/packages/handlingChar/stackabilityLevel) 0-1</p>

street	street and building number identifying a location - base type: string, max length: 80, (XPath ACSDesAdvise/TAheader/supplier/street) 0-1 (XPath ACSDesAdvise/TAheader/thirdParty/street) 0-1 (XPath ACSDesAdvise/AAbody/AAitem/thirdParty/street) 0-1 (XPath ACSDesAdvise/TAheader/buyer/street) 0-1
subCountry	short name or code of the sub-country entity - base type: string, max length: 9, (XPath ACSDesAdvise/TAheader/buyer/subCountry) 0-1 (XPath ACSDesAdvise/TAheader/thirdParty/subCountry) 0-1 (XPath ACSDesAdvise/AAbody/AAitem/thirdParty/subCountry) 0-1 (XPath ACSDesAdvise/TAheader/supplier/subCountry) 0-1
subDept	name or code of a contact department within a Party - base type: string, max length: 40, (XPath ACSDesAdvise/TAheader/supplier/subDept) 0-1 (XPath ACSDesAdvise/TAheader/buyer/subDept) 0-1 (XPath ACSDesAdvise/TAheader/thirdParty/subDept) 0-1 (XPath ACSDesAdvise/AAbody/AAitem/thirdParty/subDept) 0-1
@TAtype	type of Despatch advise - base type: string, cod. table: NT10 http://www.ebiz.enea.it/moda-ml/repository/codelist/draft/gc_NT10.xml (XPath ACSDesAdvise/@TAtype) [Optional] [Default= STD]
@TID	serial number wired into the RFID chip - base type: string, (XPath ACSDesAdvise/AAbody/AAitem/EPC/@TID) [Optional] (XPath ACSDesAdvise/AAbody/AAitem/shipInfo/packages/EPClist/EPC/@TID) [Optional] (XPath ACSDesAdvise/shipInfo/packages/EPClist/EPC/@TID) [Optional]
transCondition	special condition of transport or special service requested to the Forwarder - base type: string, cod. table: T38 http://www.ebiz.enea.it/moda-ml/repository/codelist/draft/gc_T38.xml (XPath ACSDesAdvise/AAbody/AAitem/shipInfo/transInfo/transCondition) 0-3 (XPath ACSDesAdvise/shipInfo/transInfo/transCondition) 0-3
transConditionText	free text description of the special condition of transport or special service requested to the Forwarder - base type: string, max length: 250, (XPath ACSDesAdvise/AAbody/AAitem/shipInfo/transInfo/transConditionText) 0-1 (XPath ACSDesAdvise/shipInfo/transInfo/transConditionText) 0-1
transMeans	means of transport, in general or referred to a specific leg - base type: string, cod. table: T40 http://www.ebiz.enea.it/moda-ml/repository/codelist/draft/gc_T40.xml (XPath ACSDesAdvise/AAbody/AAitem/shipInfo/transInfo/transMeans) 0-1 (XPath ACSDesAdvise/shipInfo/transInfo/transMeans) 0-1
transMode	way of transport, in general or referred to the specified leg - base type: string, cod. table: T8 http://www.ebiz.enea.it/moda-ml/repository/codelist/draft/gc_T8.xml (XPath ACSDesAdvise/shipInfo/transInfo/transMode) 1-1 (XPath ACSDesAdvise/AAbody/AAitem/shipInfo/transInfo/transMode) 1-1
@transReason	reason for the transport - base type: string, cod. table: NT11 http://www.ebiz.enea.it/moda-ml/repository/codelist/draft/gc_NT11.xml (XPath ACSDesAdvise/AAbody/AAitem/shipInfo/transInfo/@transReason) [Optional] (XPath ACSDesAdvise/shipInfo/transInfo/@transReason) [Optional]
@uid	unique element identifier within the xml document - base type: string, (XPath ACSDesAdvise/TAheader/refDoc/attachment/@uid) [Optional] (XPath ACSDesAdvise/AAbody/AAitem/refDoc/attachment/@uid) [Optional]

<p>@um</p>	<p>specification of the unit of measure - base type: string, cod. table: NT7 http://www.ebiz.enea.it/moda-ml/repository/codelist/draft/gc_NT7.xml (XPath ACSDesAdvise/AAbody/AAitem/shipInfo/actualPackageUnit/packageDim/length/@um) [Required] (XPath ACSDesAdvise/AAbody/AAitem/shipInfo/actualPackageUnit/packageDim/width/@um) [Required] (XPath ACSDesAdvise/shipInfo/packages/handlingChar/volume/@um) [Required] (XPath ACSDesAdvise/AAbody/AAitem/shipInfo/actualPackageUnit/netWeight/@um) [Required] (XPath ACSDesAdvise/AAbody/AAitem/shipInfo/actualPackageUnit/grossWeight/@um) [Required] (XPath ACSDesAdvise/shipInfo/packages/minItemsPerPackage/@um) [Required] (XPath ACSDesAdvise/shipInfo/packages/handlingChar/netWeight/@um) [Required] (XPath ACSDesAdvise/shipInfo/packages/handlingChar/grossWeight/@um) [Required] (XPath ACSDesAdvise/shipInfo/packages/itemsPerPackage/@um) [Required] (XPath ACSDesAdvise/AAbody/AAitem/shipInfo/actualPackageUnit/volume/@um) [Required] (XPath ACSDesAdvise/AAbody/AAitem/shipInfo/actualPackageUnit/packageDim/height/@um) [Required] (XPath ACSDesAdvise/AAbody/AAitem/shipInfo/packages/packageDim/length/@um) [Required] (XPath ACSDesAdvise/shipInfo/packages/handlingChar/yarnPack/yarnReel/yarnReelQty/@um) [Required] (XPath ACSDesAdvise/shipInfo/actualPackageUnit/netWeight/@um) [Required] (XPath ACSDesAdvise/shipInfo/actualPackageUnit/volume/@um) [Required] (XPath ACSDesAdvise/shipInfo/transInfo/netWeight/@um) [Required] (XPath ACSDesAdvise/AAbody/AAitem/shipInfo/packages/handlingChar/yarnPack/yarnReel/yarnReelID/@um) [Required] (XPath ACSDesAdvise/AAbody/AAitem/shipInfo/packages/packageDim/width/@um) [Required] (XPath ACSDesAdvise/AAbody/AAitem/shipInfo/packages/packageDim/height/@um) [Required] (XPath ACSDesAdvise/AAbody/AAitem/shipInfo/transInfo/netWeight/@um) [Required] (XPath ACSDesAdvise/shipInfo/transInfo/grossWeight/@um) [Required] (XPath ACSDesAdvise/shipInfo/actualPackageUnit/packageDim/height/@um) [Required] (XPath ACSDesAdvise/shipInfo/packages/handlingChar/yarnPack/yarnReel/yarnReelID/@um) [Required] (XPath ACSDesAdvise/AAbody/AAitem/csRange/sizeMatrix/sizeRow/qty/@um) [Required] (XPath ACSDesAdvise/shipInfo/actualPackageUnit/grossWeight/@um) [Required] (XPath ACSDesAdvise/AAbody/AAitem/shipInfo/transInfo/grossWeight/@um) [Required] (XPath ACSDesAdvise/shipInfo/actualPackageUnit/packageDim/width/@um) [Required] (XPath ACSDesAdvise/shipInfo/actualPackageUnit/packageDim/length/@um) [Required] (XPath ACSDesAdvise/shipInfo/packages/packageDim/length/@um) [Required] (XPath ACSDesAdvise/AAbody/AAitem/shipInfo/packages/handlingChar/grossWeight/@um) [Required] (XPath ACSDesAdvise/AAbody/AAitem/shipInfo/packages/itemsPerPackage/@um) [Required] (XPath ACSDesAdvise/AAbody/AAitem/shipInfo/packages/handlingChar/volume/@um) [Required] (XPath ACSDesAdvise/AAbody/AAitem/shipInfo/packages/handlingChar/netWeight/@um) [Required] (XPath ACSDesAdvise/AAbody/AAitem/qty/@um) [Required]</p>
------------	--

	<p>(XPath ACSDesAdvise/shipInfo/packages/handlingChar/yarnPack/yarnReel/yarnReelH/@um) [Required]</p> <p>(XPath ACSDesAdvise/AAbody/AAitem/shipInfo/packages/handlingChar/yarnPack/yarnReel/yarnReelH/@um) [Required]</p> <p>(XPath ACSDesAdvise/shipInfo/packages/packageDim/height/@um) [Required]</p> <p>(XPath ACSDesAdvise/shipInfo/packages/packageDim/width/@um) [Required]</p> <p>(XPath ACSDesAdvise/AAbody/AAitem/shipInfo/packages/handlingChar/yarnPack/yarnReel/yarnReelQty/@um) [Required]</p> <p>(XPath ACSDesAdvise/AAbody/AAitem/shipInfo/packages/minItemsPerPackage/@um) [Required]</p>
uri	<p>Uniform Resource Identifier (URI) that identifies the external object as an Internet resource</p> <p>- base type: normalizedString,</p> <p>(XPath ACSDesAdvise/TAheader/refDoc/attachment/externalReference/uri) 1-1</p> <p>(XPath ACSDesAdvise/AAbody/AAitem/refDoc/attachment/externalReference/uri) 1-1</p>
@useProfile	<p>use profile to which the present document is compliant if it was agreed by the parties. It is suggested a URI with reference to the firm or the URL of the profile.</p> <p>- base type: string,</p> <p>(XPath ACSDesAdvise/@useProfile) [Optional]</p>
variantCode	<p>Code of variant used for fashion product.</p> <p>- base type: string,</p> <p>(XPath ACSDesAdvise/AAbody/AAitem/csRange/garmentVariant/variantCode) 1-1</p>
variantType	<p>Type of variant used for fashion product (examples: 'treatment', 'washing type', 'size class',...)</p> <p>- base type: string,</p> <p>(XPath ACSDesAdvise/AAbody/AAitem/csRange/garmentVariant/variantType) 1-1</p>
@VAT	<p>VAT rate or code (DEPRECATED, use dtScheme element)</p> <p>- base type: string, cod. table: NT16</p> <p>http://www.ebiz.enea.it/moda-ml/repository/codelist/draft/gc_NT16.xml</p> <p>(XPath ACSDesAdvise/TAheader/thirdParty/@VAT) [Optional]</p> <p>(XPath ACSDesAdvise/AAbody/AAitem/lineN/@VAT) [Optional]</p> <p>- nota: <i>Deprecated, prefer dtScheme when available.</i></p> <p>(XPath ACSDesAdvise/AAbody/AAitem/thirdParty/@VAT) [Optional]</p>
@version	<p>Dictionary version from which the instance has been created</p> <p>- base type: string, cod. table: NT100</p> <p>http://www.ebiz.enea.it/moda-ml/repository/codelist/draft/gc_NT100.xml</p> <p>(XPath ACSDesAdvise/@version) [Optional] [Default= draft]</p>
volume	<p>effective volume of a specified object</p> <p>- base type: decimal, min inclusive: 0, fraction digits: 2,</p> <p>(XPath ACSDesAdvise/shipInfo/packages/handlingChar/volume) 0-1</p> <p>(XPath ACSDesAdvise/AAbody/AAitem/shipInfo/packages/handlingChar/volume) 0-1</p> <p>(XPath ACSDesAdvise/shipInfo/actualPackageUnit/volume) 0-1</p> <p>(XPath ACSDesAdvise/AAbody/AAitem/shipInfo/actualPackageUnit/volume) 0-1</p>
width	<p>effective width of a specified object</p> <p>- base type: decimal, min inclusive: 0, fraction digits: 2,</p> <p>(XPath ACSDesAdvise/shipInfo/packages/packageDim/width) 0-1</p> <p>(XPath ACSDesAdvise/AAbody/AAitem/shipInfo/actualPackageUnit/packageDim/width) 0-1</p> <p>(XPath ACSDesAdvise/AAbody/AAitem/shipInfo/packages/packageDim/width) 0-1</p> <p>(XPath ACSDesAdvise/shipInfo/actualPackageUnit/packageDim/width) 0-1</p>

yarnConeAngle	tapering angle of the cone on which a yarn is reeled - base type: positiveInteger, (XPath ACSDesAdvise/AAbody/AAitem/shipInfo/packages/handlingChar/yarnPack/yarnReel/yarnConeAngle) 0-1 (XPath ACSDesAdvise/shipInfo/packages/handlingChar/yarnPack/yarnReel/yarnConeAngle) 0-1
yarnOutWrap	code specifying the type of outer wrapping or packing of a yarn - base type: string, cod. table: T33 http://www.ebiz.enea.it/moda-ml/repository/codelist/draft/gc_T33.xml (XPath ACSDesAdvise/shipInfo/packages/handlingChar/yarnPack/yarnOutWrap) 0-1 (XPath ACSDesAdvise/AAbody/AAitem/shipInfo/packages/handlingChar/yarnPack/yarnOutWrap) 0-1
yarnOutWrapText	free text specifying the type of outer wrapping or packing of a yarn - base type: string, max length: 250, (XPath ACSDesAdvise/shipInfo/packages/handlingChar/yarnPack/yarnOutWrapText) 0-1 (XPath ACSDesAdvise/AAbody/AAitem/shipInfo/packages/handlingChar/yarnPack/yarnOutWrapText) 0-1
yarnReelD	diameter of the bobbin used for a yarn product - base type: decimal, min inclusive: 0, fraction digits: 2, (XPath ACSDesAdvise/AAbody/AAitem/shipInfo/packages/handlingChar/yarnPack/yarnReel/yarnReelD) 0-1 (XPath ACSDesAdvise/shipInfo/packages/handlingChar/yarnPack/yarnReel/yarnReelD) 0-1
yarnReelH	height of the bobbin used a yarn product - base type: decimal, min inclusive: 0, fraction digits: 2, (XPath ACSDesAdvise/AAbody/AAitem/shipInfo/packages/handlingChar/yarnPack/yarnReel/yarnReelH) 0-1 (XPath ACSDesAdvise/shipInfo/packages/handlingChar/yarnPack/yarnReel/yarnReelH) 0-1
yarnReelQty	quantity of yarn (by weight or length) wound upon a bobbin - base type: decimal, min inclusive: 0, fraction digits: 2, (XPath ACSDesAdvise/shipInfo/packages/handlingChar/yarnPack/yarnReel/yarnReelQty) 0-2 (XPath ACSDesAdvise/AAbody/AAitem/shipInfo/packages/handlingChar/yarnPack/yarnReel/yarnReelQty) 0-2
yarnReelWrap	type of wrapping in which a package of yarn is wrapped - base type: string, cod. table: T32 http://www.ebiz.enea.it/moda-ml/repository/codelist/draft/gc_T32.xml (XPath ACSDesAdvise/shipInfo/packages/handlingChar/yarnPack/yarnInWrap/yarnReelWrap) 1-1 (XPath ACSDesAdvise/AAbody/AAitem/shipInfo/packages/handlingChar/yarnPack/yarnInWrap/yarnReelWrap) 1-1

2.3 Suggested best practices

ACSDesAdvise/AAbody/AAitem/qty (net quantity of the article or object correlated, qualified by the function of the document (ordering, delivering, ..) and by the context)

this element can have two instances only if the units of measure are different

ACSDesAdvise/shipInfo/actualPackageUnit/

itemsList/itemIdentification/serialN (serial number used for the identification of a physical unit)

in the case of garment with RFID for anti-counterfeiting, RFID EPCGlobal for logistics and NFC for the customer experience there should be three serial elements with pairs of attributes numberingOrg/idQualifier: "CL"/"RFID", "GS1"/"RFID", "CL"/"NFC".

ACSDesAdvise/AAbody/AAitem/itemsList/itemIdentification/serialN (serial number used for the identification of a physical unit)

in the case of garment with RFID for anti-counterfeiting, RFID EPCGlobal for logistics and NFC for the customer experience there should be three serial elements with pairs of attributes numberingOrg/idQualifier: "CL"/"RFID", "GS1"/"RFID", "CL"/"NFC".

ACSDesAdvise/AAbody/AAitem/shipInfo/actualPackageUnit/itemsList/itemIdentification/serialN (serial number used for the identification of a physical unit)

in the case of garment with RFID for anti-counterfeiting, RFID EPCGlobal for logistics and NFC for the customer experience there should be three serial elements with pairs of attributes numberingOrg/idQualifier: "CL"/"RFID", "GS1"/"RFID", "CL"/"NFC".

ACSDesAdvise/AAbody/AAitem/csRange/sizeMatrix/

sizeRow/itemsList/itemIdentification/serialN (serial number used for the identification of a physical unit)

in the case of garment with RFID for anti-counterfeiting, RFID EPCGlobal for logistics and NFC for the customer experience there should be three serial elements with pairs of attributes numberingOrg/idQualifier: "CL"/"RFID", "GS1"/"RFID", "CL"/"NFC".

2.4 Enumeration tables

List of enumeration tables used in the XML document. You can find the corresponding codes at:
<http://www.ebiz-tcf.eu/moda-ml/imple/moda-ml-draft.asp?lingua=en&pag=6>

NT10 - Despatch Advise type
NT100 - eBIZ TCFUpstream version
NT11 - transport causal
NT16 - VAT rate or code
NT18 - message function
NT2 - third party qualifier
NT29 - format of a date
NT3 - data format
NT51 - Filling Criterion for Package homogeneity
NT6 - coding system owner/issuer
NT7 - unit of measure
T10 - ISO3166 - Country
T11 - transport package type
T21 - type of document
T29 - type of yarn package
T3 - terms of delivery
T30 - support of yarn package - material
T32 - yarn reel wrapping type
T33 - yarn outer packing
T38 - transport conditions
T4 - fabric piece inner packing (wrapping) 1
T40 - type of transport means
T421 - size system: nationality
T422 - size system: market segment
T423 - size system: base
T44 - additional code type
T5 - fabric piece inner packing (wrapping) 2
T6 - fabric piece outer packing
T8 - Modes of Transport

ACKNOWLEDGEMENT



This action is part of the eBIZ-4.0 project, which has received funding from the European Union's COSME Programme (2014 - 2020).

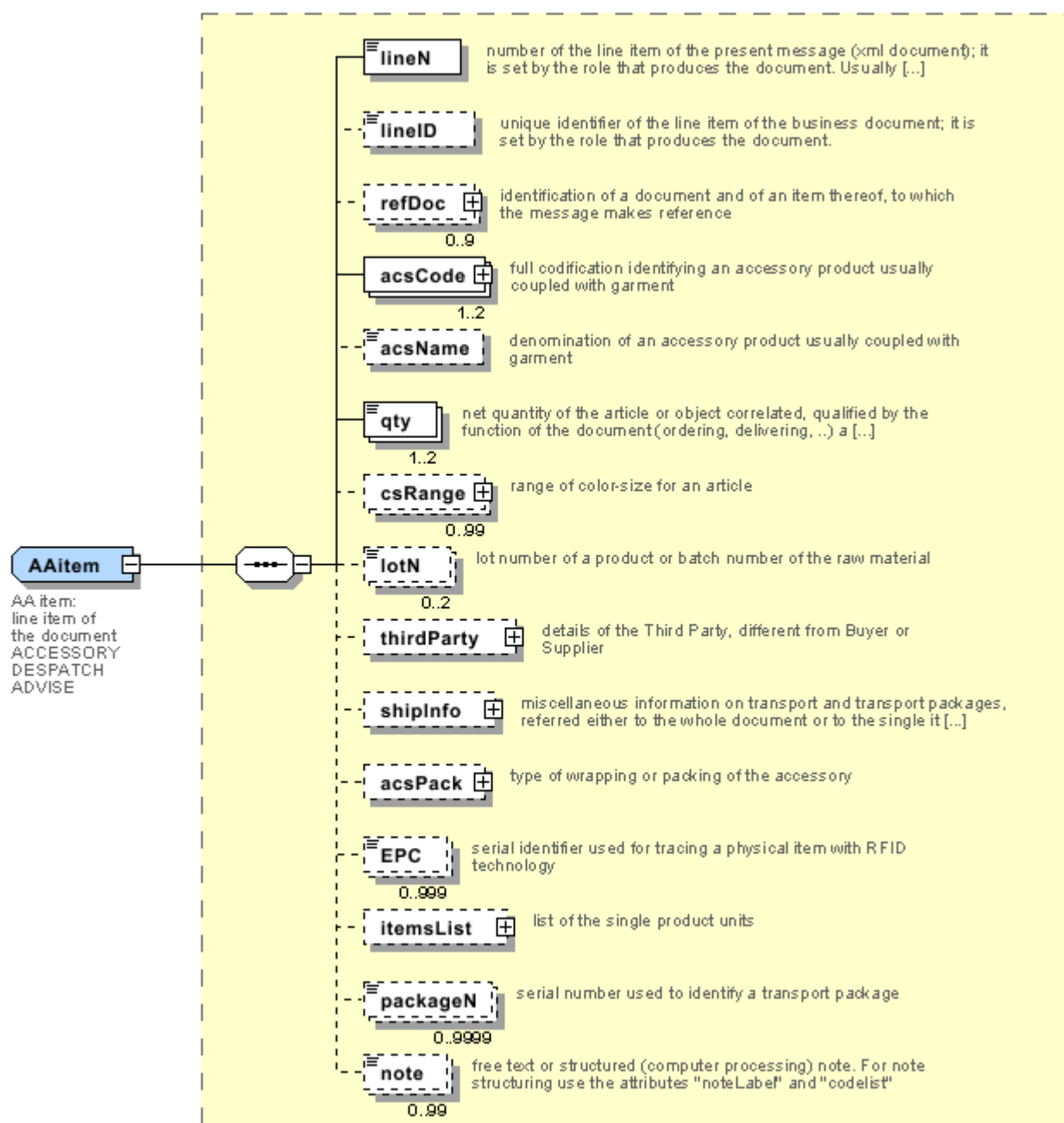
DISCLAIMER

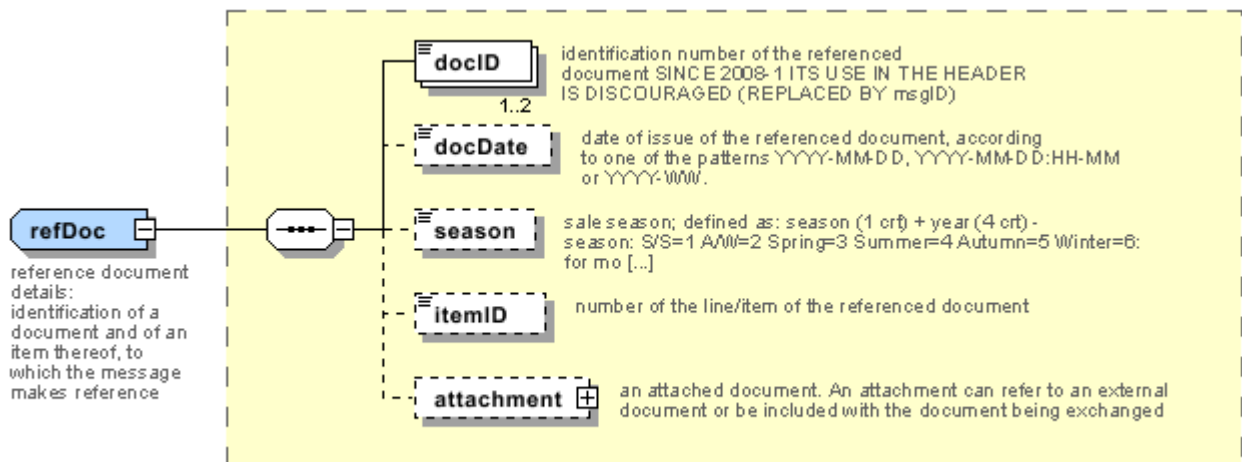
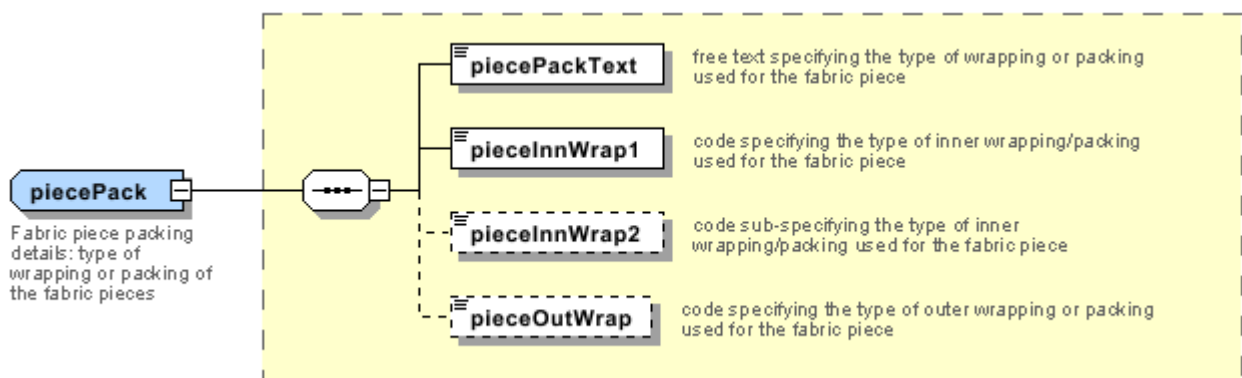
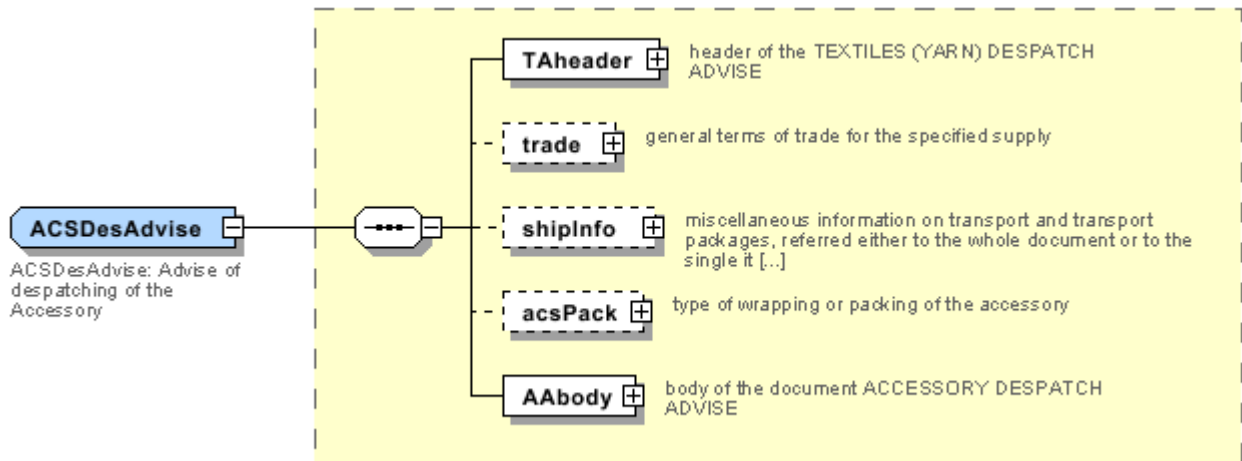
The content of this document represents the views of the authors only and is their sole responsibility; it cannot be considered to reflect the views of the European Commission and/or the Executive Agency for Small and Medium-sized Enterprises (EASME) or any other body of the European Union.

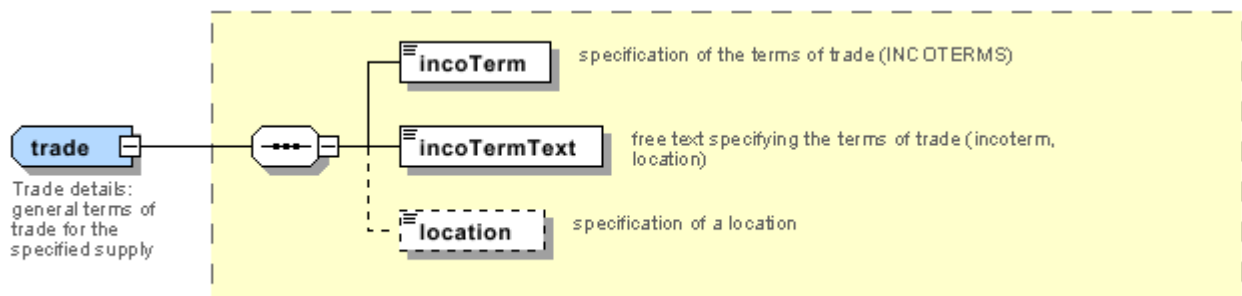
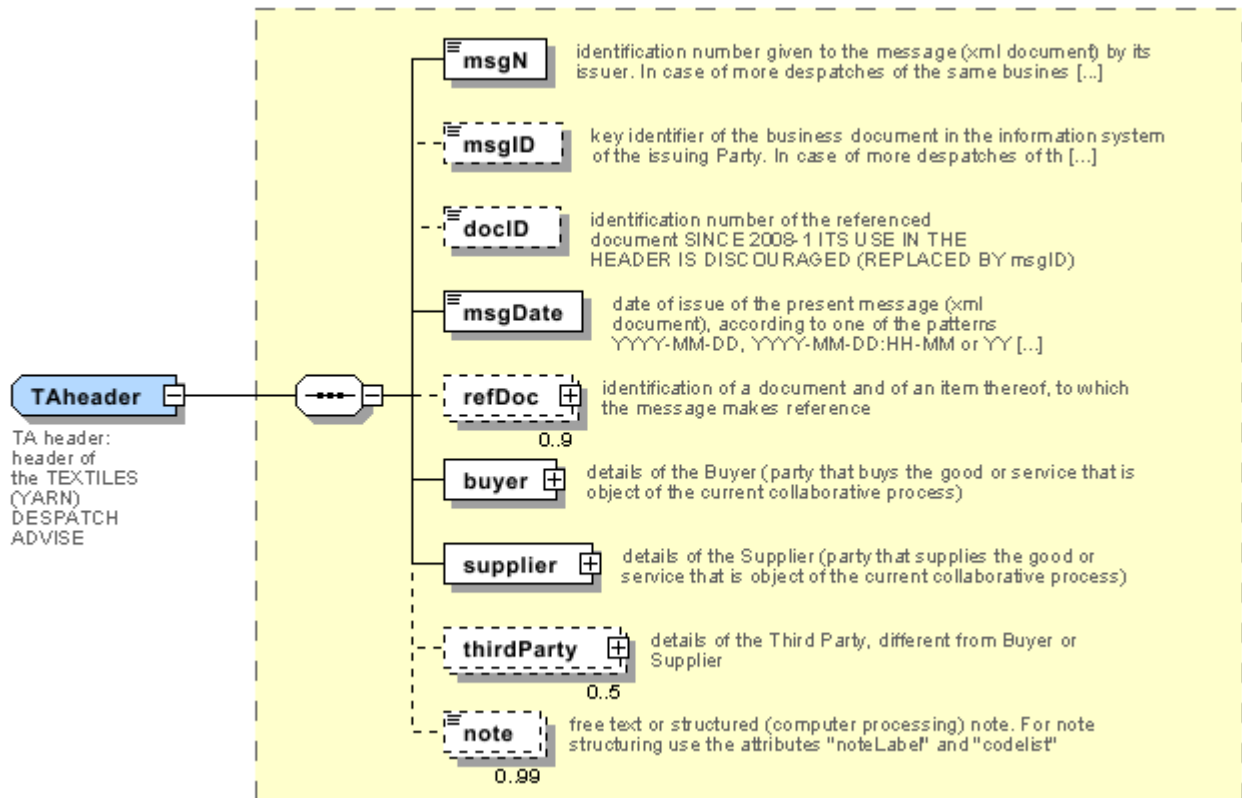
The European Commission and the Agency do not accept any responsibility for use that may be made of the information it contains.

Annex A

Representative images of the principal complex elements' structure.







Annex B

NT10 - Despatch Advise type

type of Despatch advise

Agency name: eBIZ

tabella cod.: NT10

File codes list (Generic code): http://www.ebiz.enea.it/moda-ml/repository/codelist/draft/gc_NT10.xml

Code	Description	Adoption note	Date of insertion
BRG	re-worked no-charge		01/07/2013
CLP	for work		05/12/2013
DDT	return from work		01/07/2013
DDV	for demonstration		01/07/2013
PKL	packing list		05/02/2018
PRE	pre-advise		
RCD	storage return		01/07/2013
RDV	return from demonstration		05/12/2013
RNL	not worked return		01/07/2013
RRG	return from re-worked no-charge		05/12/2013
RSB	return from sale		05/12/2013
SBT	for sale		01/07/2013
SCD	for storage		05/12/2013
STD	standard		

NT100 - eBIZ TCFUpstream version

dictionary version

Agency name: eBIZ

tabella cod.: NT100

File codes list (Generic code): http://www.ebiz.enea.it/moda-ml/repository/codelist/draft/gc_NT100.xml

Code	Description	Adoption note	Date of insertion
2013-1	v2013-1		01/07/2013
2018-1	v2018-1		04/11/2018
draft	draft		08/09/2017

NT11 - transport causal

reason for the transport

Agency name: eBIZ

tabella cod.: NT11

File codes list (Generic code): http://www.ebiz.enea.it/moda-ml/repository/codelist/draft/gc_NT11.xml

Code	Description	Adoption note	Date of insertion
FOC	free of charge		
FRW	return from re-works		
FST	return from storage		
FVW	return from view		
FWK	return from works		
IST	in storage		
NWK	return non-worked		
RJC	return from rejection		
SEL	to sell		
STO	to storage		
VEW	to view		
WRK	to works		

NT16 - VAT rate or code

VAT rate or code (DEPRECATED, use dtScheme element)

tabella cod.: NT16

File codes list (Generic code): http://www.ebiz.enea.it/moda-ml/repository/codelist/draft/gc_NT16.xml

NT18 - message function

function performed by the present message with regards to the transmission

Agency name: eBIZ

tabella cod.: NT18

File codes list (Generic code): http://www.ebiz.enea.it/moda-ml/repository/codelist/draft/gc_NT18.xml

Code	Description	Adoption note	Date of insertion
CA	delete this document		01/07/2013

CP	copy		
OR	original		
RC	re-transmission for data correction		
RT	re-transmission		

NT2 - third party qualifier

Third Party role qualifier

Agency name: eBIZ

tabella cod.: NT2

File codes list (Generic code): http://www.ebiz.enea.it/moda-ml/repository/codelist/draft/gc_NT2.xml

Code	Description	Adoption note	Date of insertion
AG	Sales Agent		
CO	Quality Controller		
DC	Response to		
DF	Invoicee		
DI	Copy to (CC)		28/10/2014
DM	Consignee		
DP	Consignment address (Delivery Party)		
IM	Importer		
OR	Originator		10/09/2014
SP	Forwarder		
TX	Tax Representative		

NT29 - format of a date

format used for the date

Agency name: eBIZ

tabella cod.: NT29

File codes list (Generic code): http://www.ebiz.enea.it/moda-ml/repository/codelist/draft/gc_NT29.xml

Code	Description	Adoption note	Date of insertion
D	YYYY-MM-DD		
M	YYYY-MM-DD:HH-MM		
W	YYYY-WW		

NT3 - data format

format of a string according to a customized User rule (local rule)

Agency name: eBIZ

tabella cod.: NT3

File codes list (Generic code): http://www.ebiz.enea.it/moda-ml/repository/codelist/draft/gc_NT3.xml

Code	Description	Adoption note	Date of insertion
EN4	GS1-GLN		01/07/2013
MD	mutually agreed		

NT51 - Filling Criterion for Package homogeneity

Filling Criterion for Package homogeneity

Agency name: eBIZ

tabella cod.: NT51

File codes list (Generic code): http://www.ebiz.enea.it/moda-ml/repository/codelist/draft/gc_NT51.xml

Code	Description	Adoption note	Date of insertion
COL	Colour		08/09/2017
MOD	Model		08/09/2017
SIZ	Size		08/09/2017

NT6 - coding system owner/issuer

code specifying the organisation who has created or owns the coding or numbering system

Agency name: eBIZ

tabella cod.: NT6

File codes list (Generic code): http://www.ebiz.enea.it/moda-ml/repository/codelist/draft/gc_NT6.xml

Code	Description	Adoption note	Date of insertion
CL	Customer/buyer		
CO	Quality Controller		
EN	GS1 (ex-EAN International)		
ES	e-Stockflow		

FO	Supplier		
GS	GS1		01/07/2013
MF	VAT identifier		
ML	Moda-ML		
SP	Service Provider		

NT7 - unit of measure

specification of the unit of measure, it is a sub set of table Unit of Measure Code - UN/ECE REC 20 delivered by United Nations Economic Commission for Europe (UN/ECE)

Agency name: eBIZ / UN/ECE

tabella cod.: NT7

File codes list (Generic code): http://www.ebiz.enea.it/moda-ml/repository/codelist/draft/gc_NT7.xml

Other link: <http://docs.oasis-open.org/ubl/os-UBL-2.1/cl/gc/default/UnitOfMeasureCode-2.1.gc#>

Code	Description	Adoption note	Date of insertion
CMK	square centimetre		20/12/2017
CMQ	cubic centimetre		20/12/2017
CMT	centimetre		
CNE	centiNewton		
CO2TON	ton of CO2		10/09/2014
COUPLES	couples		
DMQ	cubic decimetre		
E37	pixel		11/04/2018
GRM	gram		
HUR	hour		
INH	inch		
KGM	kilogram		
KMT	kilometer		
KWH	kilowatthours		10/09/2014
LBR	pound		
MIN	minute		
MMK	centimetre		20/12/2017
MMK	square millimetre		20/12/2017
MTK	square metre		20/12/2017
MTQ	cubic metre		

MTR	metre		
NMB	numero		
ONZ	ounce		
P1	percent		
PPM	parts per milion		
PZ	piece		
RPM	rounds per metre		
YRD	yard		

T10 - ISO3166 - Country

code of the nation

Agency name: ISO

tabella cod.: T10

File codes list (Generic code): http://www.ebiz.enea.it/moda-ml/repository/codelist/draft/gc_T10.xml

Table not printed: there are 239 elements, more than the maximum specified for printing: 99.

T11 - transport package type

code specifying the type of package used for transport and delivery (subset of UN/ECE 8053 and UBL TransportEquipmentTypeCode-2.1)

Agency name: eBIZ

tabella cod.: T11

File codes list (Generic code): http://www.ebiz.enea.it/moda-ml/repository/codelist/draft/gc_T11.xml

Other link: <http://docs.oasis-open.org/ubl/os-UBL-2.1/cl/gc/default/TransportEquipmentTypeCode-2.1.gc#>

Code	Description	Adoption note	Date of insertion
4A	box, steel		
4C	box, wood		
4G	Box, fibreboard		01/08/2018
4H	Box, plastic		01/08/2018
5H	Bag, woven plastic		01/08/2018
5L	Bag, textile		01/08/2018
5M	Bag, paper		
AJ	Cone		01/08/2018
BL	Bale, compressed		01/08/2018

BN	Bale, non-compressed		01/08/2018
BX	Box		
CI	Canister		01/08/2018
CL	Coil		01/08/2018
CN	Container, not otherwise specified as transport equipment		01/08/2018
CS	Case		01/08/2018
CT	Carton		01/08/2018
EC	Bag, plastic		01/08/2018
ED	Case, with pallet base		01/08/2018
EE	Case, with pallet base, wooden		01/08/2018
EF	Case, with pallet base, cardboard		01/08/2018
EG	Case, with pallet base, plastic		01/08/2018
EH	Case, with pallet base, metal		01/08/2018
FX	Bag, flexible container		01/08/2018
HN	Hanger		01/08/2018
NE	unpacked		
NF	Unpacked or unpackage, single unit		01/08/2018
NG	Unpacked or unpackage, multiple units		01/08/2018
OA	Pallet, CHEP 40 cm x 60 cm		01/08/2018
OB	Pallet, CHEP 80 cm x 120 cm		01/08/2018
OC	Pallet, CHEP 100 cm x 120 cm		01/08/2018
OD	Pallet, AS 4068-1993		01/08/2018
OE	Pallet, ISO T11		01/08/2018
PE	europallet (80x120)		
PX	pallet		
QS	box, plastic, solid		
RJ	Rack, clothing hanger		01/08/2018
RL	Reel		01/08/2018
SO	Spool		01/08/2018
TU	tube		
XD	bag, plastics film		
XK	bag,paper, multi-wall, water resistant		
ZZ	Mutually defined		01/08/2018

T21 - type of document

type or class to which the referenced document belongs

Agency name: eBIZ

tabella cod.: T21

File codes list (Generic code): http://www.ebiz.enea.it/moda-ml/repository/codelist/draft/gc_T21.xml

Code	Description	Adoption note	Date of insertion
BOR	blanket order		01/02/2018
CAT	Price catalogue - tech sheet		
CEO	Certificate of origin		13/04/2018
CER	Certificate		13/04/2018
COC	colour card		
CRN	Credit note		08/09/2017
CTO	Checking order		01/07/2013
CTR	Contract		
CXF	CxF3 file		01/07/2013
DAD	Darn order		
DDT	ddt		
DEA	Despatch advise		
DER	Despatch request		
DR	Document Request		02/12/2014
FOR	Forecast		02/12/2014
GSO	Garment stock offer		
GSX	Garment stock offer change		
INV	Invoice		
KCC	Knitting-Clothing Commission Order		02/12/2014
KCI	Garment in Work Inventory Report		02/12/2014
M2M	Made to Measure Production Order		02/12/2014
MAS	Master marker		
MCI	Visual merchandising instruction		13/04/2018
OCH	Order change		
OFF	Offer		
ORD	Purchase order		
ORP	Order response		
OSR	order status request		
OSS	Offer status		02/12/2014

OST	Order status		
OUR	our reference		
QR	Quality Report		02/12/2014
RAI	Raw Material in Work Inventory Report		02/12/2014
RDC	Raw dyeing commission order		
RDH	Raw dyeing order change		
RDR	Raw dyeing order response		
REA	Receiving advise		
REQ	Request for Offer		
RET	Return		02/12/2014
RSC	Spinning commission order		
RSH	Spinning order change		
RSR	Spinning order response		
SCL	process sheet		
TFC	Textile dyeing-finishing commission order		
TFX	Textile Dyeing-Finishing Order Change		02/12/2014
TPC	Textile printing commission order		
TPX	Textile Printing Order Change		02/12/2014
TWI	Textile in work inventory		
VMI	visual merchandising instructions		01/02/2018
WAC	Warping commission order		
WEC	Weaving commission order		
YDC	Yarn dyeing commission order		
YDH	Yarn dyeing order change		
YDR	Yarn dyeing order response		
YTC	Twisting commission order		
YWI	Yarn in work inventory		

T29 - type of yarn package

type of package (roll-up) used for a yarn product

Agency name: eBIZ

tabella cod.: T29

File codes list (Generic code): http://www.ebiz.enea.it/moda-ml/repository/codelist/draft/gc_T29.xml

Code	Description	Adoption note	Date of insertion
------	-------------	---------------	-------------------

CIL	bobbin		
CON	cone		
HNK	hank, skein		01/07/2013
MUF	muff, cake		01/07/2013
SPL	spool		
TUB	tube		
XCO	supercone		

T3 - terms of delivery

specification of the terms of trade (INCOTERMS)

Agency name: Incoterms

tabella cod.: T3

File codes list (Generic code): http://www.ebiz.enea.it/moda-ml/repository/codelist/draft/gc_T3.xml

Code	Description	Adoption note	Date of insertion
CFR	COST AND FREIGHT (named port of destination)		
CIF	COST, INSURANCE AND FREIGHT (named port of destination)		
CIP	CARRIAGE AND INSURANCE PAID (named place of destination)		
CPA	CARRIAGE PAID (named place of destination)		
DAF	DELIVERED AT FRONTIER (named place)	according to Incoterms® 2010 it is obsolete	08/12/2017
DAP	Delivered at Place of destination (named place of destination)	according to Incoterms® 2010	08/12/2017
DAT	Delivered at Terminal (named place of destination)	according to Incoterms® 2010	08/12/2017
DDP	DELIVERED DUTY PAID (named place of destination)		
DDU	DELIVERED DUTY UNPAID (named place of destination)	according to Incoterms® 2010 it is obsolete, use DAP	08/12/2017
DEQ	DELIVERED EX-QUAY (named port of destination)	according to Incoterms® 2010 it is obsolete	08/12/2017
DES	DELIVERED EX-SHIP (named port of destination)	according to Incoterms® 2010 it is obsolete	08/12/2017
EXW	EX WORKS (named place)		

FA S	FREE ALONGSIDE SHIP (named port of shipment)		
FC A	FREE CARRIER (named place)		
FO B	FREE ON BOARD (named port of shipment)		

T30 - support of yarn package - material

type of material of which a package for yarn is made

Agency name: eBIZ

tabella cod.: T30

File codes list (Generic code): http://www.ebiz.enea.it/moda-ml/repository/codelist/draft/gc_T30.xml

Code	Description	Adoption note	Date of insertion
CA	cartoon		
DY	for soft package dyeing		
MT	metallic		01/07/2013
PL	plastic		

T32 - yarn reel wrapping type

type of wrapping in which a package of yarn is wrapped

Agency name: eBIZ

tabella cod.: T32

File codes list (Generic code): http://www.ebiz.enea.it/moda-ml/repository/codelist/draft/gc_T32.xml

Code	Description	Adoption note	Date of insertion
XA	without bag		
XB	paper bag		01/07/2013
XD	plastic film bag		

T33 - yarn outer packing

code specifying the type of outer wrapping or packing of a yarn

Agency name: eBIZ

tabella cod.: T33

File codes list (Generic code): http://www.ebiz.enea.it/moda-ml/repository/codelist/draft/gc_T33.xml

Code	Description	Adoption note	Date of insertion
00			
CB	cartoon box		
CC	cartoon box 18 reels		
CD	cartoon box 36 reels		
XD	plastic film		

T38 - transport conditions

special condition of transport or special service requested to the Forwarder

tabella cod.: T38

File codes list (Generic code): http://www.ebiz.enea.it/moda-ml/repository/codelist/draft/gc_T38.xml

Code	Description	Adoption note	Date of insertion
ACC	arrange customs clearance		
CAL	Carrier loads		
CAU	Carrier unloads		
CMR	CMR carnet		
FFN	freight forwarders national conditions		
FLD	special agreement for full loading		
NCC	do not arrange customs clearance		
PPB	packaging paid by Buyer		
PPS	packaging paid by Supplier		
PRO	proof of delivery		
RFR	return container free		
RPC	return container paid by Customer		
RPS	return container paid by Supplier		
SHL	Shipper loads		
SHU	Consignee unloads		

T4 - fabric piece inner packing (wrapping) 1

code specifying the type of inner wrapping/packing used for the fabric piece

Agency name: eBIZ

tabella cod.: T4

File codes list (Generic code): http://www.ebiz.enea.it/moda-ml/repository/codelist/draft/gc_T4.xml

Code	Description	Adoption note	Date of insertion
A	Folded, whole width		
B	Folded, doubled		
C	Folded, tube products		
D	Spoiled, whole width		
E	Spoiled, doubled, pli: left		
F	Spoiled, doubled, pli: right		
G	Rolled, whole width, single item		
H	Rolled, whole width, several items		
I	Rolled, doubled		
J	Rolled, tube products		

T40 - type of transport means

means of transport, in general or referred to a specific leg

Agency name: eBIZ

tabella cod.: T40

File codes list (Generic code): http://www.ebiz.enea.it/moda-ml/repository/codelist/draft/gc_T40.xml

Code	Description	Adoption note	Date of insertion
AIR	aircraft		
SHP	ship		
TRU	truck		
VAN	van		

T421 - size system: nationality

nation or agency identifying the size system

Agency name: eBIZ

tabella cod.: T421

File codes list (Generic code): http://www.ebiz.enea.it/moda-ml/repository/codelist/draft/gc_T421.xml

Code	Description	Adoption note	Date of insertion
DE	Germany		
ES	Spain		
EU	Europe		
FR	France		
IT	Italy		
UK	United Kingdom		
US	USA		
XX	International		

T422 - size system: market segment

market segment identifying the size system

Agency name: eBIZ

tabella cod.: T422

File codes list (Generic code): http://www.ebiz.enea.it/moda-ml/repository/codelist/draft/gc_T422.xml

Code	Description	Adoption note	Date of insertion
B	baby		
C	child		
K	kid		
M	man		
U	unisex		
W	woman		

T423 - size system: base

base of the size system

Agency name: eBIZ

tabella cod.: T423

File codes list (Generic code): http://www.ebiz.enea.it/moda-ml/repository/codelist/draft/gc_T423.xml

Code	Description	Adoption note	Date of insertion
1	arab numbers		
2	latin numbers		

3	symbols		
4	letters		
H	height		
L	length		
U	unic		
W	weight		

T44 - additional code type

qualifier of the additional coding of a product

Agency name: eBIZ

tabella cod.: T44

File codes list (Generic code): http://www.ebiz.enea.it/moda-ml/repository/codelist/draft/gc_T44.xml

Code	Description	Adoption note	Date of insertion
CC	colour card		
CL	sales collection		
CO	company identification code		08/09/2017
DY	dye number		
LT	lot number		
MDI	Made in		08/09/2017
MS	manufacturing state		
PKG	packaging		09/09/2014
PL	product line		
RGB	RGB value		
SE	selvedge code		

T5 - fabric piece inner packing (wrapping) 2

code specifying the sub-type of inner wrapping/packing used for the fabric piece

Agency name: eBIZ

tabella cod.: T5

File codes list (Generic code): http://www.ebiz.enea.it/moda-ml/repository/codelist/draft/gc_T5.xml

Code	Description	Adoption note	Date of insertion
A	Open		

B	Folded once, not looped		
C	Folded twice, not looped		
H	Folded once, looped		
I	Folded twice, looped		
J	Without inner object, right side inside		
K	On carton or spooling plank, right side inside		
L	On spool (for pressure sensitive products), right side inside		
M	Without inner object, left side inside		
N	On carton or spooling plank, left side inside		
O	On spool (for pressure sensitive products), left side inside		
P	Without inner object, right side inside (deprecated code)		
Q	On carton, right side inside		
R	On wooden stick, right side inside		
S	Without inner object, left side inside (deprecated code)		
T	On carton, left side inside		
U	On wooden stick, left side inside		

T6 - fabric piece outer packing

code specifying the type of outer wrapping or packing used for the fabric piece

Agency name: eBIZ

tabella cod.: T6

File codes list (Generic code): http://www.ebiz.enea.it/moda-ml/repository/codelist/draft/gc_T6.xml

Code	Description	Adoption note	Date of insertion
0	Not wrapped		
1	Totally wrapped		
2	Wrapped, one side open		
3	Wrapped, both sides open		
4	Wrapped, one side open, with show corner		
5	Wrapped in cartons		
6	Double wrapped		

T8 - Modes of Transport

way of transport, in general or referred to the specified leg

Agency name: eBIZ

tabella cod.: T8

File codes list (Generic code): http://www.ebiz.enea.it/moda-ml/repository/codelist/draft/gc_T8.xml

Code	Description	Adoption note	Date of insertion
1	MARITIME TRANSPORT		
10	Courier		01/07/2013
2	RAIL TRANSPORT		
3	ROAD TRANSPORT		
4	AIR TRANSPORT		
5	MAIL		
6	AIR + SHIP TRANSPORT		
8	INLAND WATER TRANSPORT		
9	MODE UNKNOWN		